

---

**Product Name: KO-Validated GSTO1 Recombinant Rabbit Monoclonal Antibody****Catalog #: KVA00101**

For research use only.

**Summary**

<b>Description</b>	KO&KD-Validated antibody
<b>Host</b>	Rabbit
<b>Application</b>	WB,FCM,ICC
<b>Reactivity</b>	Human,Rat
<b>Conjugation</b>	Unconjugated
<b>Modification</b>	Unmodified
<b>Isotype</b>	Rabbit IgG
<b>Clonality</b>	Rabbit mAb
<b>Form</b>	Liquid
<b>Storage</b>	Aliquot and store at -20°C (valid for 12 months). Avoid freeze/thaw cycles.
<b>Shipping</b>	Ice bags
<b>Buffer</b>	Supplied in PBS (pH 7.4) containing 50% glycerol, and 0.02% sodium azide.
<b>Purification</b>	Affinity purification

**Application**

<b>Dilution Ratio</b>	WB 1:1,000-1:5,000; FC 1:200-1:2,000; ICC 1:100-1:1,000
<b>Molecular Weight</b>	Calculated MW: 27.6kDa

**Antigen Information**

<b>Gene Name</b>	GSTO1 GSTO1; Glutathione S-Transferase Omega 1; GSTTLp28; P28; Glutathione-Dependent Dehydroascorbate Reductase; Glutathione S-Transferase Omega 1-1; Glutathione S-
<b>Alternative Names</b>	Transferase Omega-1; S-(Phenacyl)Glutathione Reductase; Monomethylarsonic Acid Reductase; MMA(V) Reductase; EC 2.5.1.18; GSTO 1-1; SPG-R; Epididymis Secretory Protein Li 21; Glutathione-S-Transferase Like; EC 1.20.4.2; EC 1.8.5.1; HEL-S-21; GSTTLP28; GSTO-1
<b>Gene ID</b>	9446.0
<b>SwissProt ID</b>	P78417
<b>Immunogen</b>	A synthesized peptide derived from human GSTO1

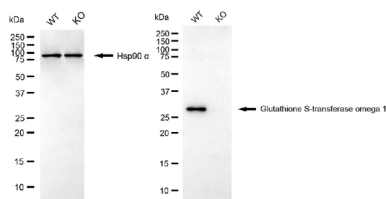
**Background**

The protein encoded by this gene is an omega class glutathione S-transferase (GST) with glutathione-dependent thiol transferase and dehydroascorbate reductase activities. GSTs are involved in the metabolism of xenobiotics and carcinogens. The encoded protein acts as a homodimer and is found in the cytoplasm. Three transcript variants encoding different isoforms have been found for this gene. [provided by RefSeq, Jul 2010]

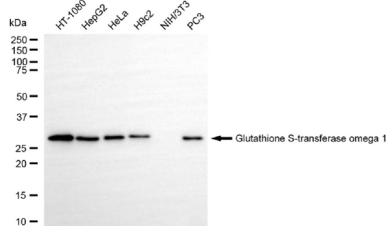
## Research Area

Tags & Cell Markers

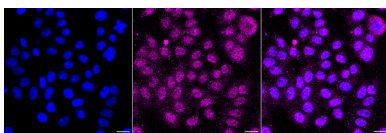
## Image Data



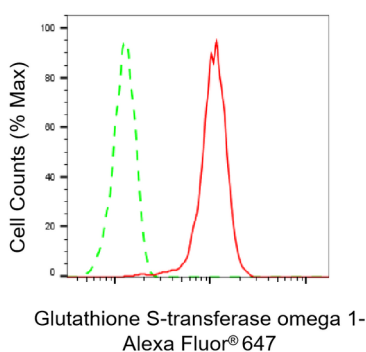
Western blotting analysis using glutathione S-transferase omega 1 antibody (KVA00101). Glutathione S-transferase omega 1 expression in wild type (WT) and glutathione S-transferase omega 1 (GSTO1) knockout (KO) HSHC cells with 20  $\mu$ g of total cell lysates. Hsp90  $\alpha$  serves as a loading control. The blot was incubated with glutathione S-transferase omega 1 antibody (KVA00101, 1:5,000) and HRP-conjugated goat anti-rabbit secondary antibody (APS0635, 1:10,000) respectively.



Western blotting analysis using glutathione S-transferase omega 1 antibody (KVA00101). Total cell lysates (30  $\mu$ g) from various cell lines were loaded and separated by SDS-PAGE. The blot was incubated with glutathione S-transferase omega 1 antibody (KVA00101, 1:5,000) and HRP-conjugated goat anti-rabbit secondary antibody (APS0635, 1:10,000) respectively.



Immunocytochemical staining of HepG2 cells with Glutathione S-transferase omega 1 antibody (KVA00101, 1:1,000). Nuclei were stained blue with DAPI; Glutathione S-transferase omega 1 was stained magenta with Alexa Fluor<sup>®</sup> 647. Images were taken using Leica stellaris 5. Protein abundance based on laser Intensity and smart gain: Medium. Scale bar, 20  $\mu$ m.



Flow cytometric analysis of Glutathione S-transferase omega 1 expression in HepG2 cells using Glutathione S-transferase omega 1 antibody (KVA00101, 1:2,000). Green, isotype control; red, Glutathione S-transferase omega 1.