

Product Name: β -1,3-Gal-TL Rabbit Polyclonal Antibody
Catalog #: APRab20341



Summary

Production Name	β -1,3-Gal-TL Rabbit Polyclonal Antibody
Description	Rabbit Polyclonal Antibody
Host	Rabbit
Application	WB,IHC-P,IF-P,IF-F,ICC/IF,ELISA
Reactivity	Human,Rat,Mouse

Performance

Conjugation	Unconjugated
Modification	Unmodified
Isotype	IgG
Clonality	Polyclonal
Form	Liquid
Storage	Store at 4°C short term. Aliquot and store at -20°C long term. Avoid freeze/thaw cycles.
Buffer	Liquid in PBS containing 50% glycerol, 0.5% BSA and 0.02% New type preservative N.
Purification	Affinity purification

Immunogen

Gene Name	B3GALT1
Alternative Names	B3GALT1; B3GTL; Beta-1; 3-glucosyltransferase; Beta3Glc-T; Beta-3-glucosyltransferase-like
Gene ID	145173.0
SwissProt ID	Q6Y288.The antiserum was produced against synthesized peptide derived from human B3GALT1. AA range:449-498

Application

Dilution Ratio	WB 1:500-1:2000, IHC-P 1:100-1:300, ELISA 1:40000, IF-P/IF-F/ICC/IF 1:50-200
Molecular Weight	57kDa

Product Name: β -1,3-Gal-TL Rabbit Polyclonal Antibody
Catalog #: APRab20341

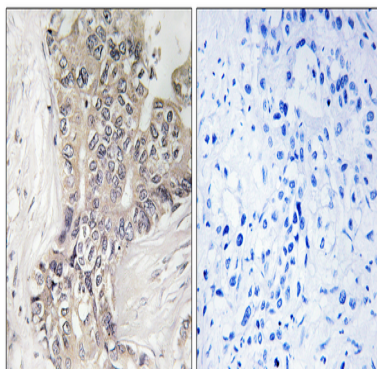


Background

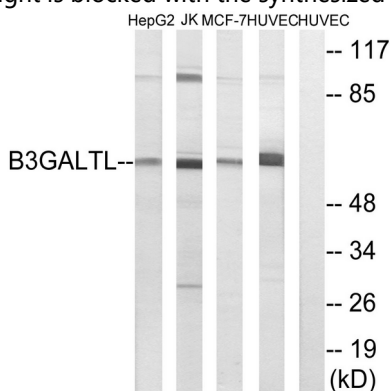
The protein encoded by this gene is a beta-1,3-glucosyltransferase that transfers glucose to O-linked fucosylglycans on thrombospondin type-1 repeats (TSRs) of several proteins. The encoded protein is a type II membrane protein. Defects in this gene are a cause of Peters-plus syndrome (PPS).[provided by RefSeq, Mar 2009],disease:Defects in B3GALTL are the cause of Peters-plus syndrome (PPS) [MIM:261540]. PPS is an autosomal recessive disorder characterized by anterior eye-chamber abnormalities, disproportionate short stature, developmental delay, characteristic craniofacial features, cleft lip and/or palate.,function:O-fucosyltransferase that transfers glucose toward fucose with a beta-1,3 linkage. Specifically glucosylates O-linked fucosylglycan on TSP type-1 domains of proteins, thereby contributing to elongation of O-fucosylglycan.,online information:GlycoGene database,pathway:Protein modification; protein glycosylation.,similarity:Belongs to the glycosyltransferase 31 family.,tissue specificity:Widely expressed, with highest levels in testis and uterus.,

Research Area

Image Data



Immunohistochemistry analysis of paraffin-embedded human liver carcinoma tissue, using B3GALTL Antibody. The picture on the right is blocked with the synthesized peptide.

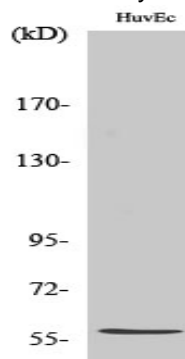


Western blot analysis of lysates from HUVEC, MCF-7, Jurkat, and HepG2 cells, using B3GALTL Antibody. The lane on the right

Product Name: β -1,3-Gal-TL Rabbit Polyclonal Antibody
Catalog #: APRab20341



is blocked with the synthesized peptide.



Western Blot analysis of various cells using β -1,3-Gal-TL Polyclonal Antibody diluted at 1 : 500. Secondary antibody was diluted at 1:20000

Note

For research use only.