

**Product Name:  $\alpha$ -protein Kinase 1 Rabbit Polyclonal Antibody**  
**Catalog #: APRab20334**

---

## Summary

<b>Production Name</b>	$\alpha$ -protein Kinase 1 Rabbit Polyclonal Antibody
<b>Description</b>	Rabbit Polyclonal Antibody
<b>Host</b>	Rabbit
<b>Application</b>	WB,IHC-P,IF-P,IF-F,ICC/IF,ELISA
<b>Reactivity</b>	Human,Mouse

## Performance

<b>Conjugation</b>	Unconjugated
<b>Modification</b>	Unmodified
<b>Isotype</b>	IgG
<b>Clonality</b>	Polyclonal
<b>Form</b>	Liquid
<b>Storage</b>	Store at 4°C short term. Aliquot and store at -20°C long term. Avoid freeze/thaw cycles.
<b>Buffer</b>	Liquid in PBS containing 50% glycerol, 0.5% BSA and 0.02% New type preservative N.
<b>Purification</b>	Affinity purification

## Immunogen

<b>Gene Name</b>	ALPK1
<b>Alternative Names</b>	ALPK1; KIAA1527; LAK; Alpha-protein kinase 1; Chromosome 4 kinase; Lymphocyte alpha-protein kinase
<b>Gene ID</b>	80216.0
<b>SwissProt ID</b>	Q96QP1.The antiserum was produced against synthesized peptide derived from human ALPK1. AA range:11-60

## Application

<b>Dilution Ratio</b>	WB 1:500-1:2000, IHC-P 1:100-1:300, IF-P/IF-F/ICC/IF 1:200-1:1000, ELISA 1:20000.Not yet tested in other applications.
-----------------------	--

**Product Name:  $\alpha$ -protein Kinase 1 Rabbit Polyclonal Antibody**  
**Catalog #: APRab20334**



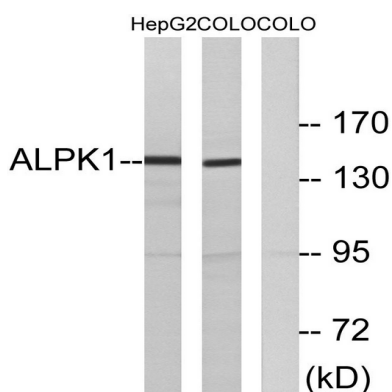
**Molecular Weight** 139kDa

## Background

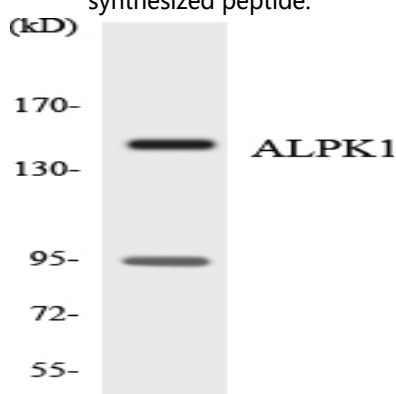
This gene encodes an alpha kinase. Mice which were homozygous for disrupted copies of this gene exhibited coordination defects (PMID: 21208416). Multiple transcript variants encoding different isoforms have been found for this gene. [provided by RefSeq, Dec 2011],function:Kinases that recognize phosphorylation sites in which the surrounding peptides have an alpha-helical conformation.,similarity:Belongs to the protein kinase superfamily. Alpha-type protein kinase family. ALPK subfamily.,similarity:Contains 1 alpha-type protein kinase domain.,tissue specificity:Highly expressed in liver.,

## Research Area

## Image Data



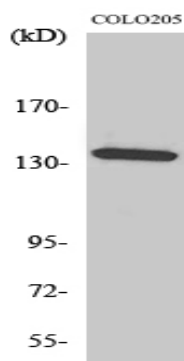
Western blot analysis of lysates from COLO and HepG2 cells, using ALPK1 Antibody. The lane on the right is blocked with the synthesized peptide.



Western blot analysis of the lysates from 293 cells using ALPK1 antibody.

**Product Name:  $\alpha$ -protein Kinase 1 Rabbit Polyclonal Antibody**  
**Catalog #: APRab20334**

---



Western Blot analysis of various cells using  $\alpha$ -protein Kinase 1 Polyclonal Antibody. Secondary antibody was diluted at 1:20000

### **Note**

For research use only.