

**Product Name: ZSCAN22 Rabbit Polyclonal Antibody**  
**Catalog #: APRab20322**



## Summary

<b>Production Name</b>	ZSCAN22 Rabbit Polyclonal Antibody
<b>Description</b>	Rabbit Polyclonal Antibody
<b>Host</b>	Rabbit
<b>Application</b>	WB,IHC-P,IF-P,IF-F,ICC/IF,ELISA
<b>Reactivity</b>	Human,Rat,Mouse

## Performance

<b>Conjugation</b>	Unconjugated
<b>Modification</b>	Unmodified
<b>Isotype</b>	IgG
<b>Clonality</b>	Polyclonal
<b>Form</b>	Liquid
<b>Storage</b>	Store at 4°C short term. Aliquot and store at -20°C long term. Avoid freeze/thaw cycles.
<b>Buffer</b>	Liquid in PBS containing 50% glycerol, 0.5% BSA and 0.02% New type preservative N.
<b>Purification</b>	Affinity purification

## Immunogen

<b>Gene Name</b>	ZSCAN22
<b>Alternative Names</b>	ZSCAN22; HKR2; ZNF50; Zinc finger and SCAN domain-containing protein 22; Krueppel-related zinc finger protein 2; Protein HKR2; Zinc finger protein 50
<b>Gene ID</b>	342945.0
<b>SwissProt ID</b>	P10073.The antiserum was produced against synthesized peptide derived from human ZSCAN22. AA range:321-370

## Application

<b>Dilution Ratio</b>	WB 1:500-1:2000, IHC-P 1:100-1:300, ELISA 1:10000, IF-P/IF-F/ICC/IF 1:50-200
<b>Molecular Weight</b>	55kDa

**Product Name: ZSCAN22 Rabbit Polyclonal Antibody**  
**Catalog #: APRab20322**

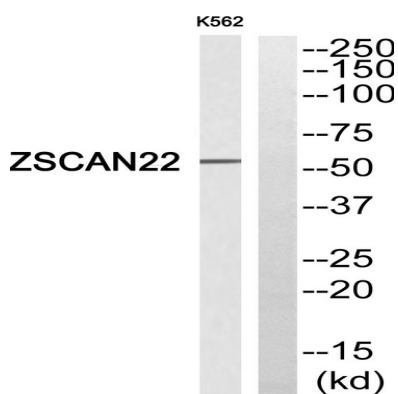


## Background

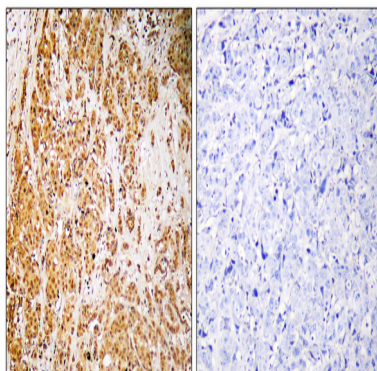
function: May be involved in transcriptional regulation., PTM: Phosphorylated upon DNA damage, probably by ATM or ATR., similarity: Belongs to the krueppel C2H2-type zinc-finger protein family., similarity: Contains 1 SCAN box domain., similarity: Contains 8 C2H2-type zinc fingers., function: May be involved in transcriptional regulation., PTM: Phosphorylated upon DNA damage, probably by ATM or ATR., similarity: Belongs to the krueppel C2H2-type zinc-finger protein family., similarity: Contains 1 SCAN box domain., similarity: Contains 8 C2H2-type zinc fingers.,

## Research Area

## Image Data

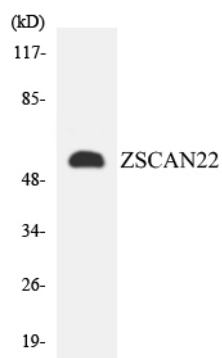


Western blot analysis of ZSCAN22 Antibody. The lane on the right is blocked with the ZSCAN22 peptide.



Immunohistochemistry analysis of paraffin-embedded human brain, using ZSCAN22 Antibody. The lane on the right is blocked with the ZSCAN22 peptide.

**Product Name: ZSCAN22 Rabbit Polyclonal Antibody**  
**Catalog #: APRab20322**



Western blot analysis of the lysates from HepG2 cells using ZSCAN22 antibody.

### **Note**

For research use only.