

**Product Name: ZNF771 Rabbit Polyclonal Antibody**  
**Catalog #: APRab20286**



## Summary

<b>Production Name</b>	ZNF771 Rabbit Polyclonal Antibody
<b>Description</b>	Rabbit Polyclonal Antibody
<b>Host</b>	Rabbit
<b>Application</b>	WB,ELISA
<b>Reactivity</b>	Human,Mouse

## Performance

<b>Conjugation</b>	Unconjugated
<b>Modification</b>	Unmodified
<b>Isotype</b>	IgG
<b>Clonality</b>	Polyclonal
<b>Form</b>	Liquid
<b>Storage</b>	Store at 4°C short term. Aliquot and store at -20°C long term. Avoid freeze/thaw cycles.
<b>Buffer</b>	Liquid in PBS containing 50% glycerol, 0.5% BSA and 0.02% New type preservative N.
<b>Purification</b>	Affinity purification

## Immunogen

<b>Gene Name</b>	ZNF771
<b>Alternative Names</b>	ZNF771; Zinc finger protein 771; Mesenchymal stem cell protein DSC43
<b>Gene ID</b>	51333.0
<b>SwissProt ID</b>	Q7L3S4.The antiserum was produced against synthesized peptide derived from human ZNF771. AA range:161-210

## Application

<b>Dilution Ratio</b>	WB 1:500-1:2000, ELISA 1:20000.Not yet tested in other applications.
<b>Molecular Weight</b>	34kDa

## Background

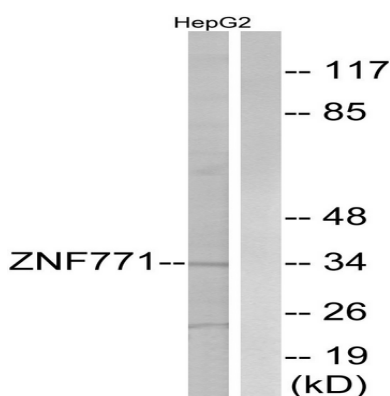
**Product Name: ZNF771 Rabbit Polyclonal Antibody**  
**Catalog #: AP Rab20286**



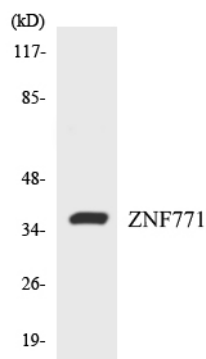
function: May be involved in transcriptional regulation., similarity: Belongs to the krueppel C2H2-type zinc-finger protein family., similarity: Contains 8 C2H2-type zinc fingers., function: May be involved in transcriptional regulation., similarity: Belongs to the krueppel C2H2-type zinc-finger protein family., similarity: Contains 8 C2H2-type zinc fingers.,

## Research Area

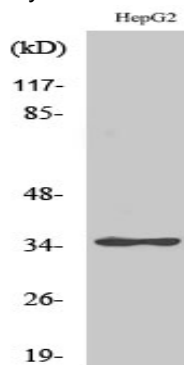
## Image Data



Western blot analysis of lysates from HepG2 cells, using ZNF771 Antibody. The lane on the right is blocked with the synthesized peptide.



Western blot analysis of the lysates from HUVEC cells using ZNF771 antibody.



**Product Name: ZNF771 Rabbit Polyclonal Antibody**  
**Catalog #: APRab20286**



---

Western Blot analysis of various cells using ZNF771 Polyclonal Antibody. Secondary antibody was diluted at 1:20000 cells nucleus extracted by Minute TM Cytoplasmic and Nuclear Fractionation kit (SC-003, Invent biotech, MN, USA) .

**Note**

For research use only.