

Product Name: ZNF682 Rabbit Polyclonal Antibody
Catalog #: APRab20278



Summary

Production Name	ZNF682 Rabbit Polyclonal Antibody
Description	Rabbit Polyclonal Antibody
Host	Rabbit
Application	WB,ELISA
Reactivity	Human,Rat,Mouse

Performance

Conjugation	Unconjugated
Modification	Unmodified
Isotype	IgG
Clonality	Polyclonal
Form	Liquid
Storage	Store at 4°C short term. Aliquot and store at -20°C long term. Avoid freeze/thaw cycles.
Buffer	Liquid in PBS containing 50% glycerol, 0.5% BSA and 0.02% New type preservative N.
Purification	Affinity purification

Immunogen

Gene Name	ZNF682
Alternative Names	ZNF682; Zinc finger protein 682
Gene ID	91120.0
SwissProt ID	O95780.The antiserum was produced against synthesized peptide derived from human ZNF682. AA range:21-70

Application

Dilution Ratio	WB 1:500-1:2000, ELISA 1:20000.Not yet tested in other applications.
Molecular Weight	58kDa

Background

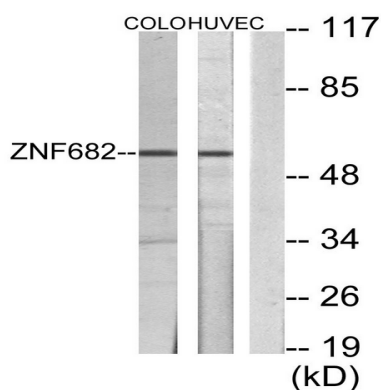
Product Name: ZNF682 Rabbit Polyclonal Antibody
Catalog #: APRab20278



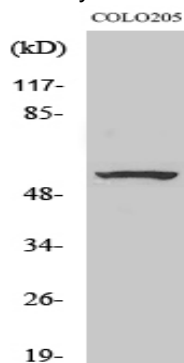
function:May be involved in transcriptional regulation.,similarity:Belongs to the krueppel C2H2-type zinc-finger protein family.,similarity:Contains 1 KRAB domain.,similarity:Contains 11 C2H2-type zinc fingers.,function:May be involved in transcriptional regulation.,similarity:Belongs to the krueppel C2H2-type zinc-finger protein family.,similarity:Contains 1 KRAB domain.,similarity:Contains 11 C2H2-type zinc fingers.,

Research Area

Image Data



Western blot analysis of lysates from COLO205 and HUVEC cells, using ZNF682 Antibody. The lane on the right is blocked with the synthesized peptide.



Western Blot analysis of various cells using ZNF682 Polyclonal Antibody. Secondary antibody was diluted at 1:20000 cells nucleus extracted by Minute TM Cytoplasmic and Nuclear Fractionation kit (SC-003, Invent biotech, MN, USA) .

Note

For research use only.