

Product Name: ZNF600 Rabbit Polyclonal Antibody
Catalog #: APRab20275



Summary

| | |
|------------------------|-----------------------------------|
| Production Name | ZNF600 Rabbit Polyclonal Antibody |
| Description | Rabbit Polyclonal Antibody |
| Host | Rabbit |
| Application | IHC-P,IF-P,IF-F,ICC/IF,ELISA |
| Reactivity | Human,Rat,Mouse |

Performance

| | |
|---------------------|--|
| Conjugation | Unconjugated |
| Modification | Unmodified |
| Isotype | IgG |
| Clonality | Polyclonal |
| Form | Liquid |
| Storage | Store at 4°C short term. Aliquot and store at -20°C long term. Avoid freeze/thaw cycles. |
| Buffer | Liquid in PBS containing 50% glycerol, 0.5% BSA and 0.02% New type preservative N. |
| Purification | Affinity purification |

Immunogen

| | |
|--------------------------|--|
| Gene Name | ZNF600 |
| Alternative Names | ZNF600; Zinc finger protein 600 |
| Gene ID | 162966.0 |
| SwissProt ID | Q6ZNG1. The antiserum was produced against synthesized peptide derived from human ZNF600. AA range:250-300 |

Application

| | |
|-------------------------|---|
| Dilution Ratio | IHC-P 1:100-1:300, ELISA 1:10000, IF-P/IF-F/ICC/IF 1:50-200 |
| Molecular Weight | |

Background

function:May be involved in transcriptional regulation.,PTM:Phosphorylated upon DNA damage, probably by ATM or

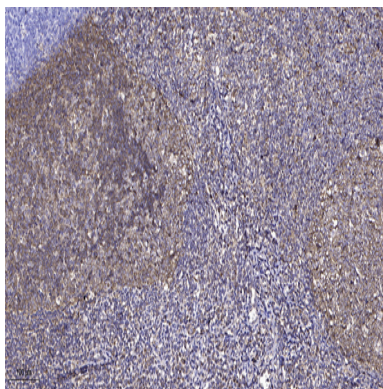
Product Name: ZNF600 Rabbit Polyclonal Antibody
Catalog #: APRab20275



ATR.,similarity:Belongs to the krueppel C2H2-type zinc-finger protein family.,similarity:Contains 20 C2H2-type zinc fingers.,function:May be involved in transcriptional regulation.,PTM:Phosphorylated upon DNA damage, probably by ATM or ATR.,similarity:Belongs to the krueppel C2H2-type zinc-finger protein family.,similarity:Contains 20 C2H2-type zinc fingers.,

Research Area

Image Data



Immunohistochemical analysis of paraffin-embedded human tonsil. 1, Antibody was diluted at 1:200 (4° overnight) . 2, Tris-EDTA,pH9.0 was used for antigen retrieval. 3,Secondary antibody was diluted at 1:200 (room temperature, 45min) .

Note

For research use only.