

**Product Name: ZNF498 Rabbit Polyclonal Antibody**  
**Catalog #: APRab20270**



## Summary

<b>Production Name</b>	ZNF498 Rabbit Polyclonal Antibody
<b>Description</b>	Rabbit Polyclonal Antibody
<b>Host</b>	Rabbit
<b>Application</b>	WB,ELISA
<b>Reactivity</b>	Human,Monkey

## Performance

<b>Conjugation</b>	Unconjugated
<b>Modification</b>	Unmodified
<b>Isotype</b>	IgG
<b>Clonality</b>	Polyclonal
<b>Form</b>	Liquid
<b>Storage</b>	Store at 4°C short term. Aliquot and store at -20°C long term. Avoid freeze/thaw cycles.
<b>Buffer</b>	Liquid in PBS containing 50% glycerol, 0.5% BSA and 0.02% New type preservative N.
<b>Purification</b>	Affinity purification

## Immunogen

<b>Gene Name</b>	ZNF498
<b>Alternative Names</b>	ZNF498; ZSCAN25; Zinc finger protein 498; Zinc finger and SCAN domain-containing protein 25
<b>Gene ID</b>	221785.0
<b>SwissProt ID</b>	Q6NSZ9.The antiserum was produced against synthesized peptide derived from human ZNF498. AA range:331-380

## Application

<b>Dilution Ratio</b>	WB 1:500-1:2000, ELISA 1:40000.Not yet tested in other applications.
<b>Molecular Weight</b>	30kDa

**Product Name: ZNF498 Rabbit Polyclonal Antibody**  
**Catalog #: APRab20270**

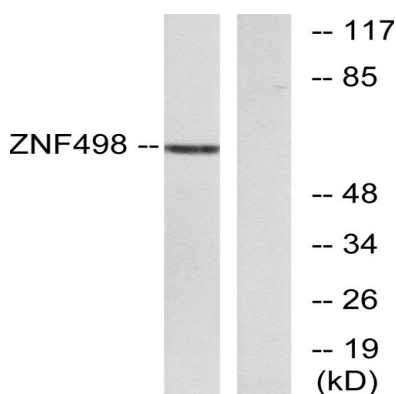


## Background

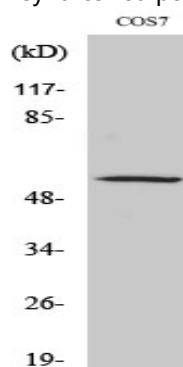
This gene encodes a protein that bears some similarity to zinc finger proteins, which are involved in DNA binding and protein-protein interactions. Multiple alternatively spliced transcript variants have been identified, but the full-length nature for most of them has not been determined. [provided by RefSeq, Jul 2008],function:May be involved in transcriptional regulation.,sequence caution:Wrong choice of frame.,similarity:Belongs to the krueppel C2H2-type zinc-finger protein family.,similarity:Contains 1 SCAN box domain.,similarity:Contains 7 C2H2-type zinc fingers.,

## Research Area

## Image Data



Western blot analysis of lysates from COS7 cells, using ZNF498 Antibody. The lane on the right is blocked with the synthesized peptide.



Western Blot analysis of various cells using ZNF498 Polyclonal Antibody. Secondary antibody was diluted at 1:20000 cells nucleus extracted by Minute TM Cytoplasmic and Nuclear Fractionation kit (SC-003, Invent biotech, MN, USA) .

## Note

For research use only.