

Summary

Production Name	ZNF295 Rabbit Polyclonal Antibody
Description	Rabbit Polyclonal Antibody
Host	Rabbit
Application	IHC-P,IF-P,IF-F,ICC/IF,ELISA
Reactivity	Human,Mouse

Performance

Conjugation	Unconjugated
Modification	Unmodified
Isotype	IgG
Clonality	Polyclonal
Form	Liquid
Storage	Store at 4°C short term. Aliquot and store at -20°C long term. Avoid freeze/thaw cycles.
Buffer	Liquid in PBS containing 50% glycerol, 0.5% BSA and 0.02% New type preservative N.
Purification	Affinity purification

Immunogen

Gene Name	ZNF295
Alternative Names	ZNF295; KIAA1227; ZBTB21; Zinc finger protein 295; Zinc finger and BTB domain-containing protein 21
Gene ID	49854.0
SwissProt ID	Q9ULJ3. The antiserum was produced against synthesized peptide derived from human ZNF295. AA range:731-780

Application

Dilution Ratio	IHC-P 1:100-1:300, ELISA 1:10000, IF-P/IF-F/ICC/IF 1:50-200
Molecular Weight	

Background

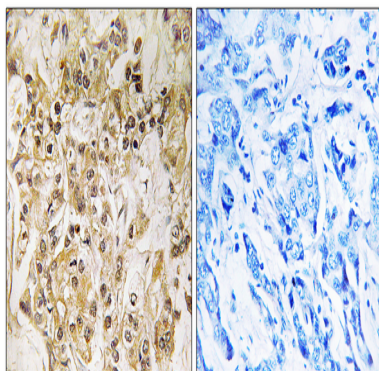
Product Name: ZNF295 Rabbit Polyclonal Antibody
Catalog #: APRab20258



function:May be involved in transcriptional regulation.,PTM:Phosphorylated upon DNA damage, probably by ATM or ATR.,similarity:Contains 1 BTB (POZ) domain.,similarity:Contains 8 C2H2-type zinc fingers.,function:May be involved in transcriptional regulation.,PTM:Phosphorylated upon DNA damage, probably by ATM or ATR.,similarity:Contains 1 BTB (POZ) domain.,similarity:Contains 8 C2H2-type zinc fingers.,

Research Area

Image Data



Immunohistochemistry analysis of paraffin-embedded human breast carcinoma tissue, using ZNF295 Antibody. The picture on the right is blocked with the synthesized peptide.

Note

For research use only.