

Summary

Production Name	ZIS Rabbit Polyclonal Antibody
Description	Rabbit Polyclonal Antibody
Host	Rabbit
Application	WB,IHC-P,IF-P,IF-F,ICC/IF,ELISA
Reactivity	Human,Mouse,Rat

Performance

Conjugation	Unconjugated
Modification	Unmodified
Isotype	IgG
Clonality	Polyclonal
Form	Liquid
Storage	Store at 4°C short term. Aliquot and store at -20°C long term. Avoid freeze/thaw cycles.
Buffer	Liquid in PBS containing 50% glycerol, 0.5% BSA and 0.02% New type preservative N.
Purification	Affinity purification

Immunogen

Gene Name	ZRANB2
Alternative Names	ZRANB2; ZIS; ZNF265; Zinc finger Ran-binding domain-containing protein 2; Zinc finger protein 265; Zinc finger; splicing
Gene ID	9406.0
SwissProt ID	O95218.The antiserum was produced against synthesized peptide derived from human ZNF265. AA range:106-155

Application

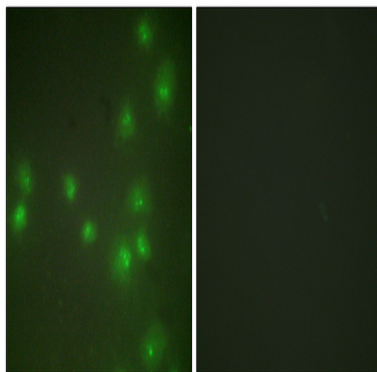
Dilution Ratio	WB 1:500-1:2000, IHC-P 1:100-1:300, IF-P/IF-F/ICC/IF 1:200-1:1000, ELISA 1:10000.Not yet tested in other applications.
Molecular Weight	34kDa

Background

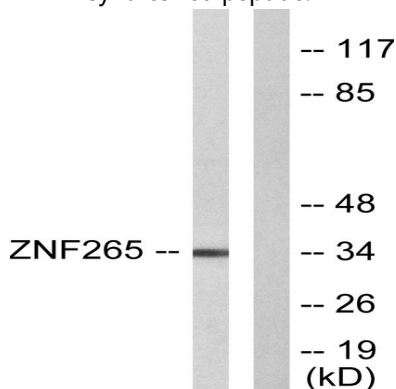
domain:The RanBP2-type zinc fingers mediate binding to RNA.,function:Splice factor required for alternative splicing of TRA2B/SFRS10 transcripts. May interfere with constitutive 5'-splice site selection.,PTM:Isoform 2 is phosphorylated on Ser-310 upon DNA damage, probably by ATM or ATR.,sequence caution:Intron retention.,similarity:Belongs to the ZRANB2 family.,similarity:Contains 2 RanBP2-type zinc fingers.,subunit:Interacts with the C-terminal half of SNRNP70, the Arg/Ser-rich domain of XE7 as well as with U2AF1 and CLK1.,domain:The RanBP2-type zinc fingers mediate binding to RNA.,function:Splice factor required for alternative splicing of TRA2B/SFRS10 transcripts. May interfere with constitutive 5'-splice site selection.,PTM:Isoform 2 is phosphorylated on Ser-310 upon DNA damage, probably by ATM or ATR.,sequence caution:Intron retention.,similarity:Belongs to the ZRANB2 family.,similarity:Contains 2 RanBP2-type zinc fingers.,subunit:Interacts with the C-terminal half of SNRNP70, the Arg/Ser-rich domain of XE7 as well as with U2AF1 and CLK1.,

Research Area

Image Data



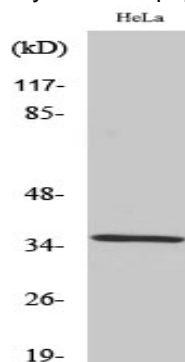
Immunofluorescence analysis of HUVEC cells, using ZNF265 Antibody. The picture on the right is blocked with the synthesized peptide.



Product Name: ZIS Rabbit Polyclonal Antibody
Catalog #: APRab20115



Western blot analysis of lysates from HeLa cells, using ZNF265 Antibody. The lane on the right is blocked with the synthesized peptide.



Western Blot analysis of various cells using ZIS Polyclonal Antibody. Secondary antibody was diluted at 1:20000 cells nucleus extracted by Minute TM Cytoplasmic and Nuclear Fractionation kit (SC-003, Invent biotech, MN, USA) .

Note

For research use only.