

Summary

Production Name	ZIP9 Rabbit Polyclonal Antibody
Description	Rabbit Polyclonal Antibody
Host	Rabbit
Application	WB,ELISA
Reactivity	Human,Rat

Performance

Conjugation	Unconjugated
Modification	Unmodified
Isotype	IgG
Clonality	Polyclonal
Form	Liquid
Storage	Store at 4°C short term. Aliquot and store at -20°C long term. Avoid freeze/thaw cycles.
Buffer	Liquid in PBS containing 50% glycerol, 0.5% BSA and 0.02% New type preservative N.
Purification	Affinity purification

Immunogen

Gene Name	SLC39A9
Alternative Names	SLC39A9; ZIP9; Zinc transporter ZIP9; Solute carrier family 39 member 9; Zrt- and Irt-like protein 9; ZIP-9
Gene ID	55334.0
SwissProt ID	Q9NUM3.The antiserum was produced against synthesized peptide derived from human SLC39A9. AA range:101-150

Application

Dilution Ratio	WB 1:500-1:2000, ELISA 1:10000.Not yet tested in other applications.
Molecular Weight	33kDa

Product Name: ZIP9 Rabbit Polyclonal Antibody
Catalog #: APRab20114

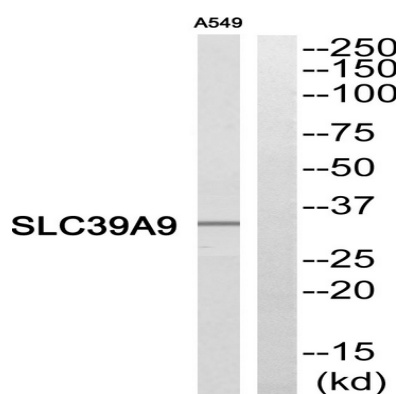


Background

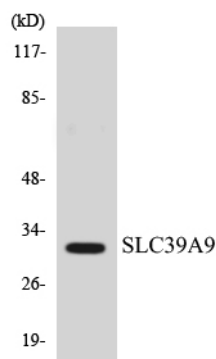
function: May act as a zinc-influx transporter., similarity: Belongs to the ZIP transporter (TC 2.A.5) family., function: May act as a zinc-influx transporter., similarity: Belongs to the ZIP transporter (TC 2.A.5) family.,

Research Area

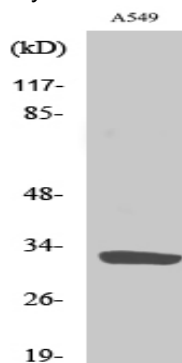
Image Data



Western blot analysis of SLC39A9 Antibody. The lane on the right is blocked with the SLC39A9 peptide.



Western blot analysis of the lysates from HeLa cells using SLC39A9 antibody.



Western Blot analysis of various cells using ZIP9 Polyclonal Antibody. Secondary antibody was diluted at 1:20000

Product Name: ZIP9 Rabbit Polyclonal Antibody
Catalog #: APRab20114



Note

For research use only.