

## Summary

<b>Production Name</b>	ZIP1 Rabbit Polyclonal Antibody
<b>Description</b>	Rabbit Polyclonal Antibody
<b>Host</b>	Rabbit
<b>Application</b>	WB,ELISA
<b>Reactivity</b>	Human,Rat,Mouse

## Performance

<b>Conjugation</b>	Unconjugated
<b>Modification</b>	Unmodified
<b>Isotype</b>	IgG
<b>Clonality</b>	Polyclonal
<b>Form</b>	Liquid
<b>Storage</b>	Store at 4°C short term. Aliquot and store at -20°C long term. Avoid freeze/thaw cycles.
<b>Buffer</b>	Liquid in PBS containing 50% glycerol, 0.5% BSA and 0.02% New type preservative N.
<b>Purification</b>	Affinity purification

## Immunogen

<b>Gene Name</b>	SLC39A1 SLC39A1; IRT1; ZIP1; ZIRT1; CGI-08; CGI-71; Zinc transporter ZIP1; Solute carrier family 39 member 1; Zinc-iron-regulated transporter-like; Zrt- and Irt-like protein 1; ZIP-1; hZIP1
<b>Alternative Names</b>	
<b>Gene ID</b>	27173.0
<b>SwissProt ID</b>	Q9NY26.The antiserum was produced against synthesized peptide derived from human SLC39A1. AA range:111-160

## Application

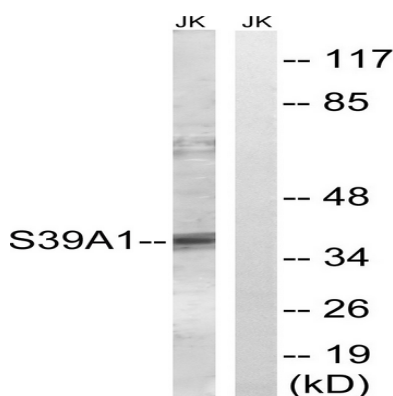
<b>Dilution Ratio</b>	WB 1:500-1:2000, ELISA 1:5000.Not yet tested in other applications.
<b>Molecular Weight</b>	38kDa

## Background

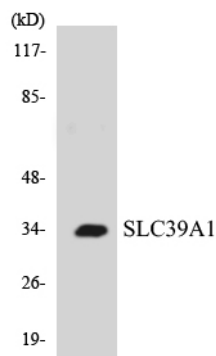
This gene encodes a member of the zinc-iron permease family. The encoded protein is localized to the cell membrane and acts as a zinc uptake transporter. This gene has been linked to prostate cancer, breast cancer, and Alzheimer's disease. Alternative splicing results in multiple transcript variants. [provided by RefSeq, Dec 2012], function: Mediates zinc uptake. May function as a major endogenous zinc uptake transporter in many cells of the body. Responsible for the rapid uptake and accumulation of physiologically effective zinc in prostate cells., miscellaneous: Inhibited by Ni(2+) ions. Fe(2+) ions do not inhibit zinc uptake., similarity: Belongs to the ZIP transporter (TC 2.A.5) family., subcellular location: Shows a vesicular localization corresponding partially to the endoplasmic reticulum in several epithelial cell lines., tissue specificity: Ubiquitous. Expressed in most adult and fetal tissues including the epidermis.,

## Research Area

## Image Data



Western blot analysis of lysates from Jurkat cells, using SLC39A1 Antibody. The lane on the right is blocked with the synthesized peptide.



Western blot analysis of the lysates from COLO205 cells using SLC39A1 antibody.

**Product Name: ZIP1 Rabbit Polyclonal Antibody**  
**Catalog #: APRab20109**

---



**Note**

For research use only.