

Product Name: ZFP91 Rabbit Polyclonal Antibody
Catalog #: APRab20092



Summary

Production Name	ZFP91 Rabbit Polyclonal Antibody
Description	Rabbit Polyclonal Antibody
Host	Rabbit
Application	WB,ELISA
Reactivity	Human,Mouse,Rat

Performance

Conjugation	Unconjugated
Modification	Unmodified
Isotype	IgG
Clonality	Polyclonal
Form	Liquid
Storage	Store at 4°C short term. Aliquot and store at -20°C long term. Avoid freeze/thaw cycles.
Buffer	Liquid in PBS containing 50% glycerol, 0.5% BSA and 0.02% New type preservative N.
Purification	Affinity purification

Immunogen

Gene Name	ZFP91 ZNF757 FKSG11
Alternative Names	ZFP91 ZNF757 FKSG11
Gene ID	80829.0
SwissProt ID	Q96JP5. The antiserum was produced against synthesized peptide derived from the Internal region of human ZFP91. AA range:401-450

Application

Dilution Ratio	WB 1:500-2000, ELISA 1:10000-20000
Molecular Weight	60kDa

Background

The protein encoded by this gene is a member of the zinc finger family of proteins. The gene product contains C2H2-type

Product Name: ZFP91 Rabbit Polyclonal Antibody
Catalog #: APRab20092

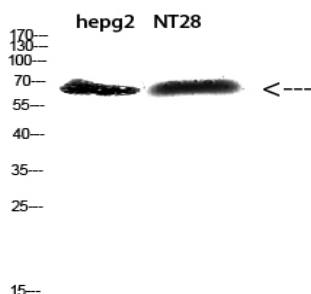


domains, which are the classical zinc finger domains found in numerous nucleic acid-binding proteins. This protein functions as a regulator of the non-canonical NF-kappaB pathway in lymphotoxin-beta receptor signaling. Alternative splicing results in multiple transcript variants. A read-through transcript variant composed of ZFP91 and the downstream CNTF gene sequence has been identified, but it is thought to be non-coding. Read-through transcription of ZFP91 and CNTF has also been observed in mouse. A ZFP91-related pseudogene has also been identified on chromosome 2. [provided by RefSeq, Oct 2010],disease:Overexpressed in most acute myelogenous leukemia (AML) cases (27 over 29),,function:CNTF is a survival factor for various neuronal cell types. Seems to prevent the degeneration of motor axons after axotomy,,function:May be involved in transcriptional regulation. May play an important role in cell proliferation and/or anti-apoptosis,,online information:Ciliary neurotrophic factor entry,similarity:Belongs to the CNTF family,,similarity:Belongs to the krueppel C2H2-type zinc-finger protein family,,similarity:Contains 5 C2H2-type zinc fingers,,subunit:Homodimer,,tissue specificity:Expressed ubiquitously, particularly at high level in testis. Isoform 2 is testis specific,,tissue specificity:Nervous system,,

Research Area

Cytokine-cytokine receptor interaction;Jak_STAT;

Image Data



Western Blot analysis of hepg2, NT28 cells using Antibody diluted at 500. Secondary antibody was diluted at 1:20000

Note

For research use only.