

Product Name: ZC3H13 Rabbit Polyclonal Antibody
Catalog #: APRab20052



Summary

Production Name	ZC3H13 Rabbit Polyclonal Antibody
Description	Rabbit Polyclonal Antibody
Host	Rabbit
Application	WB,ELISA
Reactivity	Human,Mouse

Performance

Conjugation	Unconjugated
Modification	Unmodified
Isotype	IgG
Clonality	Polyclonal
Form	Liquid
Storage	Store at 4°C short term. Aliquot and store at -20°C long term. Avoid freeze/thaw cycles.
Buffer	Liquid in PBS containing 50% glycerol, 0.5% BSA and 0.02% New type preservative N.
Purification	Affinity purification

Immunogen

Gene Name	ZC3H13
Alternative Names	ZC3H13; KIAA0853; Zinc finger CCCH domain-containing protein 13
Gene ID	23091.0
SwissProt ID	Q5T200.The antiserum was produced against synthesized peptide derived from human ZC3H13. AA range:1571-1620

Application

Dilution Ratio	WB 1:500-1:2000, ELISA 1:10000.Not yet tested in other applications.
Molecular Weight	200kDa

Background

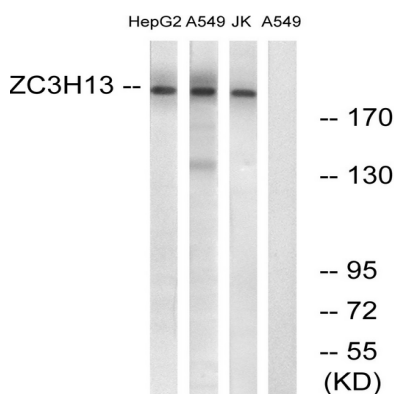
Product Name: ZC3H13 Rabbit Polyclonal Antibody
Catalog #: AP Rab20052



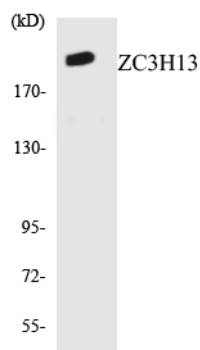
PTM:Phosphorylated upon DNA damage, probably by ATM or ATR.,similarity:Contains 1 C3H1-type zinc finger.,PTM:Phosphorylated upon DNA damage, probably by ATM or ATR.,similarity:Contains 1 C3H1-type zinc finger.,

Research Area

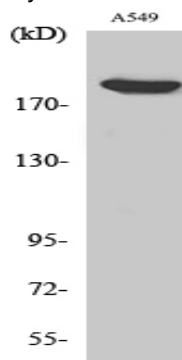
Image Data



Western blot analysis of lysates from A549, Jurkat, HepG2 cells, using ZC3H13 Antibody. The lane on the right is blocked with the synthesized peptide.



Western blot analysis of the lysates from HUVEC cells using ZC3H13 antibody.



Western Blot analysis of various cells using ZC3H13 Polyclonal Antibody. Secondary antibody was diluted at 1:20000

Product Name: ZC3H13 Rabbit Polyclonal Antibody
Catalog #: APRab20052



Note

For research use only.