

Product Name: ZC3H11A Rabbit Polyclonal Antibody
Catalog #: APRab20051



Summary

Production Name	ZC3H11A Rabbit Polyclonal Antibody
Description	Rabbit Polyclonal Antibody
Host	Rabbit
Application	WB,ELISA
Reactivity	Human,Monkey

Performance

Conjugation	Unconjugated
Modification	Unmodified
Isotype	IgG
Clonality	Polyclonal
Form	Liquid
Storage	Store at 4°C short term. Aliquot and store at -20°C long term. Avoid freeze/thaw cycles.
Buffer	Liquid in PBS containing 50% glycerol, 0.5% BSA and 0.02% New type preservative N.
Purification	Affinity purification

Immunogen

Gene Name	ZC3H11A
Alternative Names	ZC3H11A; KIAA0663; ZC3HDC11A; Zinc finger CCCH domain-containing protein 11A
Gene ID	9877.0
SwissProt ID	O75152.The antiserum was produced against synthesized peptide derived from human ZC3H11A. AA range:291-340

Application

Dilution Ratio	WB 1:500-1:2000, ELISA 1:20000.Not yet tested in other applications.
Molecular Weight	110kDa

Background

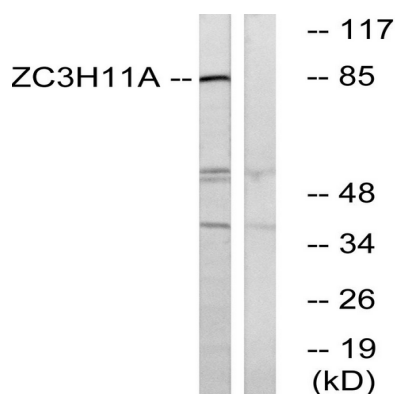
Product Name: ZC3H11A Rabbit Polyclonal Antibody
Catalog #: APRab20051



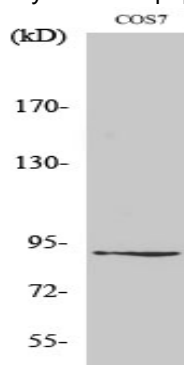
PTM:Phosphorylated upon DNA damage, probably by ATM or ATR.,sequence caution:Contaminating sequence. Potential poly-A sequence.,similarity:Contains 3 C3H1-type zinc fingers.,PTM:Phosphorylated upon DNA damage, probably by ATM or ATR.,sequence caution:Contaminating sequence. Potential poly-A sequence.,similarity:Contains 3 C3H1-type zinc fingers.,

Research Area

Image Data



Western blot analysis of lysates from COS cells, using ZC3H11A Antibody. The lane on the right is blocked with the synthesized peptide.



Western Blot analysis of various cells using ZC3H11A Polyclonal Antibody diluted at 1: 1000. Secondary antibody was diluted at 1:20000

Note

For research use only.