

## Summary

<b>Production Name</b>	ZADH2 Rabbit Polyclonal Antibody
<b>Description</b>	Rabbit Polyclonal Antibody
<b>Host</b>	Rabbit
<b>Application</b>	WB,IHC-P,IF-P,IF-F,ICC/IF,ELISA
<b>Reactivity</b>	Human,Mouse,Rat

## Performance

<b>Conjugation</b>	Unconjugated
<b>Modification</b>	Unmodified
<b>Isotype</b>	IgG
<b>Clonality</b>	Polyclonal
<b>Form</b>	Liquid
<b>Storage</b>	Store at 4°C short term. Aliquot and store at -20°C long term. Avoid freeze/thaw cycles.
<b>Buffer</b>	Liquid in PBS containing 50% glycerol, 0.5% BSA and 0.02% New type preservative N.
<b>Purification</b>	Affinity purification

## Immunogen

<b>Gene Name</b>	ZADH2
<b>Alternative Names</b>	ZADH2; Zinc-binding alcohol dehydrogenase domain-containing protein 2
<b>Gene ID</b>	284273.0
<b>SwissProt ID</b>	Q8N4Q0.The antiserum was produced against synthesized peptide derived from human ZADH2. AA range:191-240

## Application

<b>Dilution Ratio</b>	WB 1:500-1:2000, IHC-P 1:100-1:300, ELISA 1:10000, IF-P/IF-F/ICC/IF 1:50-200
<b>Molecular Weight</b>	45kDa

## Background

**Product Name: ZADH2 Rabbit Polyclonal Antibody**  
**Catalog #: APRab20025**

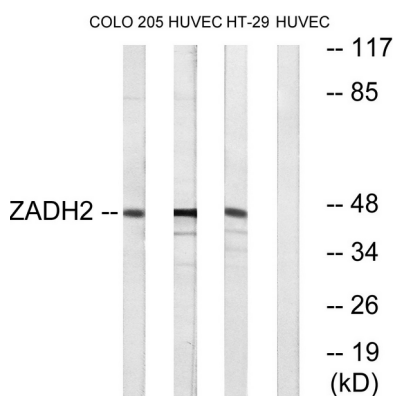


similarity:Belongs to the zinc-containing alcohol dehydrogenase family. Quinone oxidoreductase

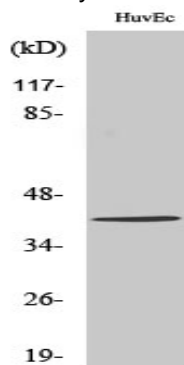
subfamily.,similarity:Belongs to the zinc-containing alcohol dehydrogenase family. Quinone oxidoreductase subfamily.,

## Research Area

## Image Data



Western blot analysis of lysates from HUVEC, HT-29, and COLO cells, using ZADH2 Antibody. The lane on the right is blocked with the synthesized peptide.



Western Blot analysis of various cells using ZADH2 Polyclonal Antibody. Secondary antibody was diluted at 1:20000

## Note

For research use only.