

Summary

Production Name	X11γ Rabbit Polyclonal Antibody
Description	Rabbit Polyclonal Antibody
Host	Rabbit
Application	WB,IHC-P,IF-P,IF-F,ICC/IF,ELISA
Reactivity	Human,Rat,Mouse

Performance

Conjugation	Unconjugated
Modification	Unmodified
Isotype	IgG
Clonality	Polyclonal
Form	Liquid
Storage	Store at 4°C short term. Aliquot and store at -20°C long term. Avoid freeze/thaw cycles.
Buffer	Liquid in PBS containing 50% glycerol, 0.5% BSA and 0.02% New type preservative N.
Purification	Affinity purification

Immunogen

Gene Name	APBA3 APBA3; MINT3; X11L2; Amyloid beta A4 precursor protein-binding family A member 3;
Alternative Names	Adapter protein X11gamma; Neuron-specific X11L2 protein; Neuronal Munc18-1-interacting protein 3; Mint-3
Gene ID	9546.0
SwissProt ID	O96018.The antiserum was produced against synthesized peptide derived from human APBA3. AA range:361-410

Application

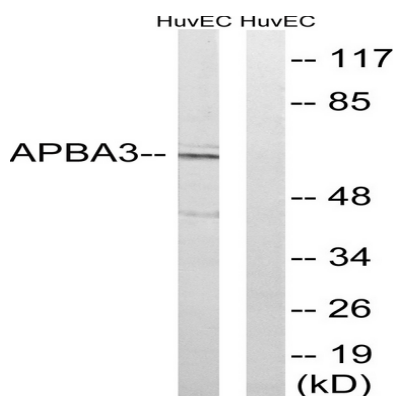
Dilution Ratio	WB 1:500-1:2000, IHC-P 1:100-1:300, ELISA 1:40000, IF-P/IF-F/ICC/IF 1:50-200
Molecular Weight	61kDa

Background

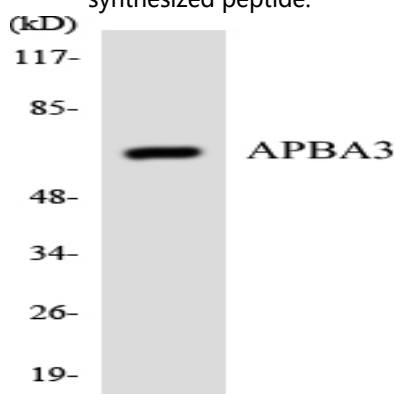
amyloid beta precursor protein binding family A member 3 (APBA3) Homo sapiens The protein encoded by this gene is a member of the X11 protein family. It is an adapter protein that interacts with the Alzheimer's disease amyloid precursor protein. This gene product is believed to be involved in signal transduction processes. This gene is a candidate gene for Alzheimer's disease. [provided by RefSeq, Jul 2008], domain: Composed of an N-terminal domain, a middle phosphotyrosine-binding domain (PID/PTB) that mediates binding with the cytoplasmic domain of the beta-amyloid precursor protein, and two C-terminal PDZ domains thought to attach proteins to the plasma membrane., function: May modulate processing of the beta-amyloid precursor protein (APP) and hence formation of beta-APP., similarity: Contains 1 PDZ (DHR) domain., similarity: Contains 1 PID domain., similarity: Contains 2 PDZ (DHR) domains., subunit: Binds to the cytoplasmic domain of amyloid protein (APP) in vivo., tissue specificity: Expressed in all the tissues examined with lower levels in brain and testis.,

Research Area

Image Data



Western blot analysis of lysates from HUVEC cells, using APBA3 Antibody. The lane on the right is blocked with the synthesized peptide.



Product Name: X11γ Rabbit Polyclonal Antibody
Catalog #: APRab19944



Western blot analysis of the lysates from COLO205 cells using APBA3 antibody.

Note

For research use only.