

Product Name: VPS35 Rabbit Polyclonal Antibody
Catalog #: APRab19834



Summary

Production Name	VPS35 Rabbit Polyclonal Antibody
Description	Rabbit Polyclonal Antibody
Host	Rabbit
Application	WB,ELISA
Reactivity	Human,Mouse,Rat

Performance

Conjugation	Unconjugated
Modification	Unmodified
Isotype	IgG
Clonality	Polyclonal
Form	Liquid
Storage	Store at 4°C short term. Aliquot and store at -20°C long term. Avoid freeze/thaw cycles.
Buffer	Liquid in PBS containing 50% glycerol, 0.5% BSA and 0.02% New type preservative N.
Purification	Affinity purification

Immunogen

Gene Name	VPS35
Alternative Names	Vacuolar protein sorting-associated protein 35 (hVPS35) (Maternal-embryonic 3) (Vesicle protein sorting 35)
Gene ID	55737.0
SwissProt ID	Q96QK1. Synthesized peptide derived from VPS35 at AA range: 511-560

Application

Dilution Ratio	WB 1:500-2000, ELISA 1:10000-20000
Molecular Weight	92kDa

Background

This gene belongs to a group of vacuolar protein sorting (VPS) genes. The encoded protein is a component of a large

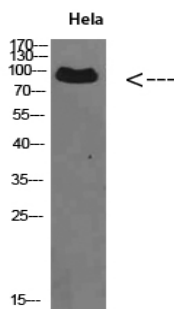
Product Name: VPS35 Rabbit Polyclonal Antibody
Catalog #: APRab19834



multimeric complex, termed the retromer complex, involved in retrograde transport of proteins from endosomes to the trans-Golgi network. The close structural similarity between the yeast and human proteins that make up this complex suggests a similarity in function. Expression studies in yeast and mammalian cells indicate that this protein interacts directly with VPS35, which serves as the core of the retromer complex. [provided by RefSeq, Jul 2008],function:Essential component of the retromer complex, a complex required to retrieve lysosomal enzyme receptors (IGF2R and M6PR) from endosomes to the trans-Golgi network. Also required to regulate transcytosis of the polymeric immunoglobulin receptor (pIgR-plgA).,similarity:Belongs to the VPS35 family.,subunit:Component of the retromer complex composed of VPS26 (VPS26A or VPS26B), VPS29, VPS35, SNX1 and SNX2. Interacts directly with VPS26A and VPS26B. Found in a complex with XPO7, EIF4A1, ARHGAP1, VPS26A, VPS29, VPS35 and SFN.,tissue specificity:Ubiquitous. Highly expressed in heart, brain, placenta, skeletal muscle, spleen, thymus, testis, ovary, small intestine, kidney and colon.,

Research Area

Image Data



Western Blot analysis of HeLa cells using VPS35 Polyclonal Antibody diluted at 1:500. Secondary antibody was diluted at 1:20000

Note

For research use only.