

Summary

Production Name	VN2R1P Rabbit Polyclonal Antibody
Description	Rabbit Polyclonal Antibody
Host	Rabbit
Application	WB,IF-P,IF-F,ICC/IF,ELISA
Reactivity	Human,Rat,Mouse

Performance

Conjugation	Unconjugated
Modification	Unmodified
Isotype	IgG
Clonality	Polyclonal
Form	Liquid
Storage	Store at 4°C short term. Aliquot and store at -20°C long term. Avoid freeze/thaw cycles.
Buffer	Liquid in PBS containing 50% glycerol, 0.5% BSA and 0.02% New type preservative N.
Purification	Affinity purification

Immunogen

Gene Name	CASRL1
Alternative Names	
Gene ID	344760.0
SwissProt ID	Q8NGV9.The antiserum was produced against synthesized peptide derived from human CASRL1. AA range:400-449

Application

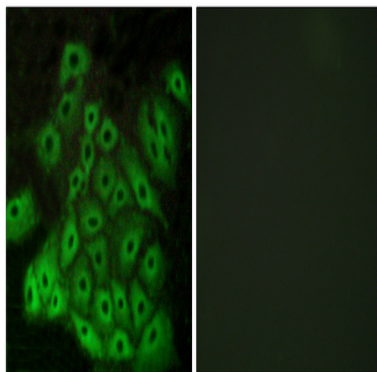
Dilution Ratio	WB 1:500-1:2000, IF-P/IF-F/ICC/IF 1:200-1:1000, ELISA 1:10000.Not yet tested in other applications.
Molecular Weight	83kDa

Background

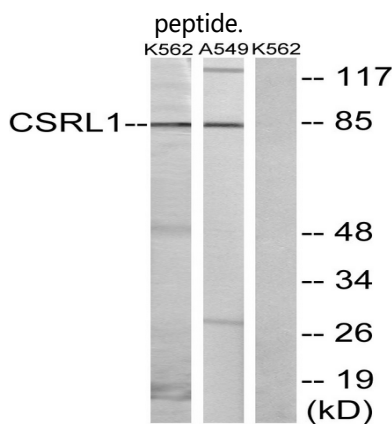
The CARL-1 monoclonal antibody reacts with human TWEAK, a type II transmembrane TNF superfamily member with high identity to TNF in its extracellular portion. TWEAK transcript is expressed broadly in many adult and fetal tissues, however, the staining of human peripheral blood mononuclear cells with monoclonal antibodies shows a more restricted pattern. While freshly isolated PBMCs do not express detectable levels of TWEAK on their surface, IFN-gamma-stimulated blood monocytes rapidly upregulate TWEAK surface expression. TWEAK is expressed as membrane bound and secreted forms. Interaction of TWEAK with its counter-receptor promotes secretion of IL-8, activation of NF-kappaB, proliferation of endothelial cells, and apoptosis in a number of human cell lines. Initially, DR3 was thought to be a receptor for TWEAK, but further studies have shown that TWEAK could induce apoptosis via receptors distinct from DR3. While TWEAK exhibits overlapping signaling functions to TNF, it is generally less effective in inducing apoptosis, giving rise to its name, TNF-like weak inducer of apoptosis. For detection of human TWEAK by sandwich ELISA, a combination of purified CARL-2 for capture and biotinylated CARL-1 for detection is recommended.

Research Area

Image Data



Immunofluorescence analysis of A549 cells, using CSRL1 Antibody. The picture on the right is blocked with the synthesized



Product Name: VN2R1P Rabbit Polyclonal Antibody
Catalog #: APRab19816



Western blot analysis of lysates from K562 cells and A549 cells, using CSRL1 Antibody. The lane on the right is blocked with the synthesized peptide.

Note

For research use only.