

## Summary

<b>Production Name</b>	VEGF-B Rabbit Polyclonal Antibody
<b>Description</b>	Rabbit Polyclonal Antibody
<b>Host</b>	Rabbit
<b>Application</b>	WB,IHC-P,IF-P,IF-F,ICC/IF,ELISA
<b>Reactivity</b>	Human,Mouse,Rat

## Performance

<b>Conjugation</b>	Unconjugated
<b>Modification</b>	Unmodified
<b>Isotype</b>	IgG
<b>Clonality</b>	Polyclonal
<b>Form</b>	Liquid
<b>Storage</b>	Store at 4°C short term. Aliquot and store at -20°C long term. Avoid freeze/thaw cycles.
<b>Buffer</b>	Liquid in PBS containing 50% glycerol, 0.5% BSA and 0.02% New type preservative N.
<b>Purification</b>	Affinity purification

## Immunogen

<b>Gene Name</b>	VEGFB
<b>Alternative Names</b>	VEGFB; VRF; Vascular endothelial growth factor B; VEGF-B; VEGF-related factor; VRF
<b>Gene ID</b>	7423.0
<b>SwissProt ID</b>	P49765.The antiserum was produced against synthesized peptide derived from human VEGFB. AA range:91-140

## Application

<b>Dilution Ratio</b>	WB 1:500-1:2000, IHC-P 1:100-300, ELISA 1:20000, IF-P/IF-F/ICC/IF 1:100-300, Not yet tested in other applications.
<b>Molecular Weight</b>	21kDa

**Product Name: VEGF-B Rabbit Polyclonal Antibody**  
**Catalog #: APRab19772**



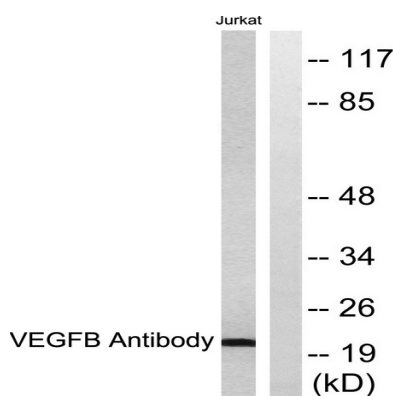
## Background

This gene encodes a member of the PDGF (platelet-derived growth factor)/VEGF (vascular endothelial growth factor) family. The VEGF family members regulate the formation of blood vessels and are involved in endothelial cell physiology. This member is a ligand for VEGFR-1 (vascular endothelial growth factor receptor 1) and NRP-1 (neuropilin-1). Studies in mice showed that this gene was co-expressed with nuclear-encoded mitochondrial genes and the encoded protein specifically controlled endothelial uptake of fatty acids. Alternatively spliced transcript variants encoding distinct isoforms have been identified. [provided by RefSeq, Sep 2011], alternative products: Additional isoforms seem to exist, function: Growth factor for endothelial cells. VEGF-B167 binds heparin and neuropilin-1 whereas the binding to neuropilin-1 of VEGF-B186 is regulated by proteolysis, PTM: VEGF-B186 is O-glycosylated, similarity: Belongs to the PDGF/VEGF growth factor family, subcellular location: Secreted but remains associated to cells or to the extracellular matrix unless released by heparin, subunit: Homodimer; disulfide-linked. Can also form heterodimer with VEGF, tissue specificity: Expressed in all tissues except liver. Highest levels found in heart, skeletal muscle and pancreas,

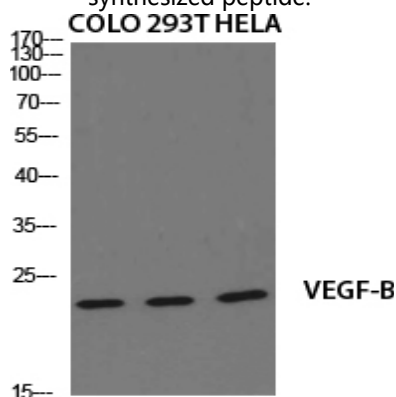
## Research Area

Cytokine-cytokine receptor interaction; mTOR; Focal adhesion; Pathways in cancer; Renal cell carcinoma; Pancreatic cancer; Bladder cancer;

## Image Data



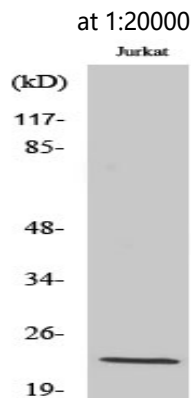
Western blot analysis of lysates from Jurkat cells, using VEGFB Antibody. The lane on the right is blocked with the synthesized peptide.



**Product Name: VEGF-B Rabbit Polyclonal Antibody**  
**Catalog #: APRab19772**



Western Blot analysis of various cells using VEGF-B Polyclonal Antibody diluted at 1 : 2000. Secondary antibody was diluted



Western Blot analysis of Jurkat cells using VEGF-B Polyclonal Antibody diluted at 1 : 2000. Secondary antibody was diluted at 1:20000

### **Note**

For research use only.