

Product Name: V1RL2 Rabbit Polyclonal Antibody
Catalog #: APRab19698



Summary

Production Name	V1RL2 Rabbit Polyclonal Antibody
Description	Rabbit Polyclonal Antibody
Host	Rabbit
Application	WB,IF-P,IF-F,ICC/IF,ELISA
Reactivity	Human,Rat,Mouse

Performance

Conjugation	Unconjugated
Modification	Unmodified
Isotype	IgG
Clonality	Polyclonal
Form	Liquid
Storage	Store at 4°C short term. Aliquot and store at -20°C long term. Avoid freeze/thaw cycles.
Buffer	Liquid in PBS containing 50% glycerol, 0.5% BSA and 0.02% New type preservative N.
Purification	Affinity purification

Immunogen

Gene Name	VN1R2
Alternative Names	VN1R2; V1RL2; Vomeronasal type-1 receptor 2; G-protein coupled receptor GPCR25; hGPCR25; V1r-like receptor 2
Gene ID	317701.0
SwissProt ID	Q8NFZ6.The antiserum was produced against synthesized peptide derived from human VN1R2. AA range:88-137

Application

Dilution Ratio	WB 1:500-1:2000, IF-P/IF-F/ICC/IF 1:200-1:1000, ELISA 1:40000.Not yet tested in other applications.
Molecular Weight	46kDa

Product Name: V1RL2 Rabbit Polyclonal Antibody
Catalog #: APRab19698

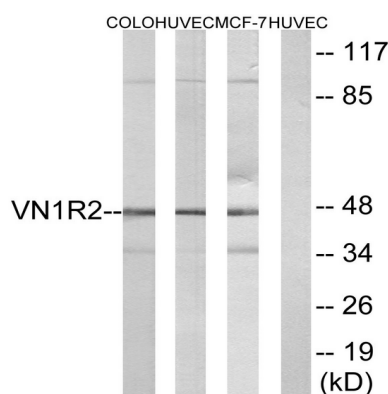


Background

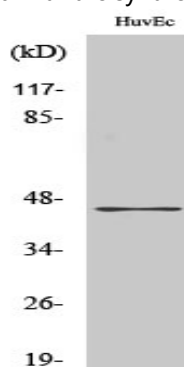
function: Putative pheromone receptor., miscellaneous: The chimpanzee, gorilla and orangutan orthologous proteins do not exist, their genes are pseudogenes., online information: No one nose - Issue 61 of August 2005, similarity: Belongs to the G-protein coupled receptor 1 family., function: Putative pheromone receptor., miscellaneous: The chimpanzee, gorilla and orangutan orthologous proteins do not exist, their genes are pseudogenes., online information: No one nose - Issue 61 of August 2005, similarity: Belongs to the G-protein coupled receptor 1 family.,

Research Area

Image Data



Western blot analysis of lysates from HUVEC, COLO, and MCF-7 cells, using VN1R2 Antibody. The lane on the right is blocked with the synthesized peptide.



Western Blot analysis of various cells using V1RL2 Polyclonal Antibody. Secondary antibody was diluted at 1:20000

Note

For research use only.