

Summary

Production Name	UROC28 Rabbit Polyclonal Antibody
Description	Rabbit Polyclonal Antibody
Host	Rabbit
Application	WB,IHC-P,IF-P,IF-F,ICC/IF,ELISA
Reactivity	Human,Rat,Mouse

Performance

Conjugation	Unconjugated
Modification	Unmodified
Isotype	IgG
Clonality	Polyclonal
Form	Liquid
Storage	Store at 4°C short term. Aliquot and store at -20°C long term. Avoid freeze/thaw cycles.
Buffer	Liquid in PBS containing 50% glycerol, 0.5% BSA and 0.02% New type preservative N.
Purification	Affinity purification

Immunogen

Gene Name	PBOV1
Alternative Names	PBOV1; UROC28; Prostate and breast cancer overexpressed gene 1 protein; Protein UROC28; UC28
Gene ID	59351.0
SwissProt ID	Q9GZY1.The antiserum was produced against synthesized peptide derived from human PBOV1. AA range:31-80

Application

Dilution Ratio	WB 1:500-1:2000, IHC-P 1:100-1:300, IF-P/IF-F/ICC/IF 1:200-1:1000, ELISA 1:40000.Not yet tested in other applications.
Molecular Weight	19kDa

Product Name: UROC28 Rabbit Polyclonal Antibody
Catalog #: APRab19647

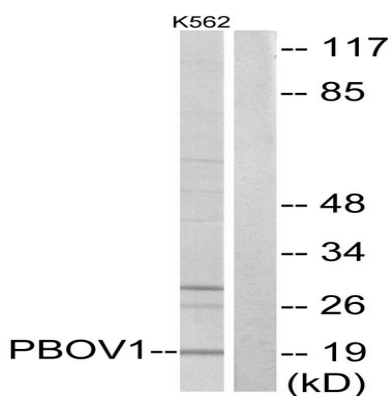


Background

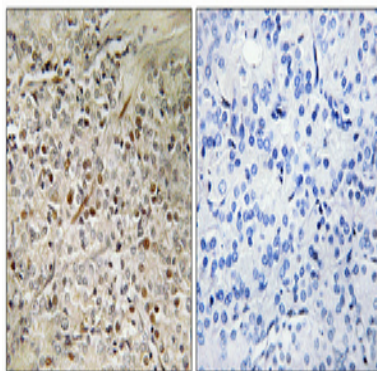
This intronless gene encodes a protein of unknown function. Its expression is up-regulated in some types of cancer, including prostate, breast, and bladder cancer. [provided by RefSeq, Aug 2011], tissue specificity: Expressed in colon, prostate, small intestine, testis and spleen, with lower expression in thymus, ovary, and peripheral blood leukocytes. Up-regulated expression in prostate, breast, and bladder cancer, but not in lung and colon cancer.

Research Area

Image Data



Western blot analysis of lysates from K562 cells, using PBOV1 Antibody. The lane on the right is blocked with the synthesized peptide.



Immunohistochemical analysis of paraffin-embedded Human prostate cancer. Antibody was diluted at 1:100 (4°, overnight). High-pressure and temperature Tris-EDTA, pH 8.0 was used for antigen retrieval. Negative control (right) obtained from antibody was pre-absorbed by immunogen peptide.

Note

For research use only.

Product Name: UROC28 Rabbit Polyclonal Antibody
Catalog #: APRab19647

