

**Product Name: UEV3 Rabbit Polyclonal Antibody**  
**Catalog #: APRab19606**



## Summary

<b>Production Name</b>	UEV3 Rabbit Polyclonal Antibody
<b>Description</b>	Rabbit Polyclonal Antibody
<b>Host</b>	Rabbit
<b>Application</b>	WB,IHC-P,IF-P,IF-F,ICC/IF,ELISA
<b>Reactivity</b>	Human,Rat,Mouse

## Performance

<b>Conjugation</b>	Unconjugated
<b>Modification</b>	Unmodified
<b>Isotype</b>	IgG
<b>Clonality</b>	Polyclonal
<b>Form</b>	Liquid
<b>Storage</b>	Store at 4°C short term. Aliquot and store at -20°C long term. Avoid freeze/thaw cycles.
<b>Buffer</b>	Liquid in PBS containing 50% glycerol, 0.5% BSA and 0.02% New type preservative N.
<b>Purification</b>	Affinity purification

## Immunogen

<b>Gene Name</b>	UEVLD
<b>Alternative Names</b>	UEVLD; UEV3; Ubiquitin-conjugating enzyme E2 variant 3; UEV-3; EV and lactate/malate dehydrogenase domain-containing protein
<b>Gene ID</b>	55293.0
<b>SwissProt ID</b>	Q8IX04.The antiserum was produced against synthesized peptide derived from human UEVLD. AA range:141-190

## Application

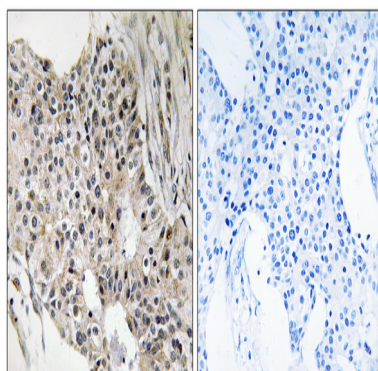
<b>Dilution Ratio</b>	WB 1:500-1:2000, IHC-P 1:100-1:300, ELISA 1:40000, IF-P/IF-F/ICC/IF 1:50-200
<b>Molecular Weight</b>	52kDa

## Background

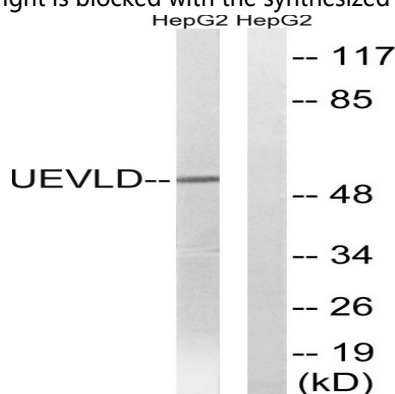
function: Possible negative regulator of polyubiquitination., similarity: Contains 1 UEV (ubiquitin E2 variant) domain., similarity: In the C-terminal section; belongs to the LDH/MDH superfamily., similarity: In the N-terminal section; belongs to the ubiquitin-conjugating enzyme family. UEV subfamily., subunit: Homodimer., tissue specificity: Colon, colon carcinoma cell lines, normal cervical epithelium, carcinomas of the uterine cervix and peripheral blood leukocytes., function: Possible negative regulator of polyubiquitination., similarity: Contains 1 UEV (ubiquitin E2 variant) domain., similarity: In the C-terminal section; belongs to the LDH/MDH superfamily., similarity: In the N-terminal section; belongs to the ubiquitin-conjugating enzyme family. UEV subfamily., subunit: Homodimer., tissue specificity: Colon, colon carcinoma cell lines, normal cervical epithelium, carcinomas of the uterine cervix and peripheral blood leukocytes.,

## Research Area

## Image Data



Immunohistochemistry analysis of paraffin-embedded human breast carcinoma tissue, using UEVLD Antibody. The picture on the right is blocked with the synthesized peptide.



Western blot analysis of lysates from HepG2 cells, using UEVLD Antibody. The lane on the right is blocked with the synthesized peptide.

**Product Name: UEV3 Rabbit Polyclonal Antibody**  
**Catalog #: APRab19606**

---



**Note**

For research use only.