

Summary

| | |
|------------------------|---------------------------------|
| Production Name | Uba5 Rabbit Polyclonal Antibody |
| Description | Rabbit Polyclonal Antibody |
| Host | Rabbit |
| Application | WB,IHC-P,IF-P,IF-F,ICC/IF,ELISA |
| Reactivity | Human,Mouse,Rat |

Performance

| | |
|---------------------|--|
| Conjugation | Unconjugated |
| Modification | Unmodified |
| Isotype | IgG |
| Clonality | Polyclonal |
| Form | Liquid |
| Storage | Store at 4°C short term. Aliquot and store at -20°C long term. Avoid freeze/thaw cycles. |
| Buffer | Liquid in PBS containing 50% glycerol, 0.5% BSA and 0.02% New type preservative N. |
| Purification | Affinity purification |

Immunogen

| | |
|--------------------------|---|
| Gene Name | UBA5 |
| Alternative Names | UBA5; UBE1DC1; Ubiquitin-like modifier-activating enzyme 5; Ubiquitin-activating enzyme 5; ThiFP1; UFM1-activating enzyme; Ubiquitin-activating enzyme E1 domain-containing protein 1 |
| Gene ID | 79876.0 |
| SwissProt ID | Q9GZZ9.The antiserum was produced against synthesized peptide derived from human UBA5. AA range:281-330 |

Application

| | |
|-------------------------|---|
| Dilution Ratio | WB 1:500-1:2000, IHC-P 1:100-1:300, ELISA 1:5000, IF-P/IF-F/ICC/IF 1:50-200 |
| Molecular Weight | 45kDa |

Product Name: Uba5 Rabbit Polyclonal Antibody
Catalog #: APRab19507

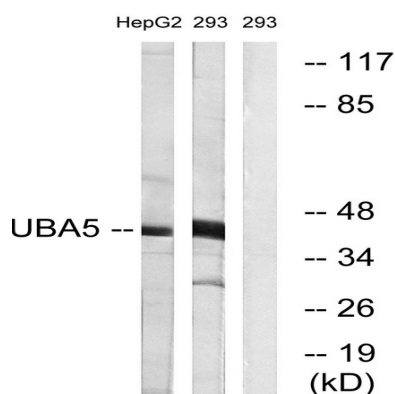


Background

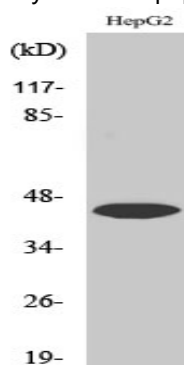
This gene encodes a member of the E1-like ubiquitin-activating enzyme family. This protein activates ubiquitin-fold modifier 1, a ubiquitin-like post-translational modifier protein, via the formation of a high-energy thioester bond. Alternative splicing results in multiple transcript variants. A pseudogene of this gene has been identified on chromosome 1. [provided by RefSeq, Feb 2016],function:E1-like enzyme which activates UFM1.,similarity:Belongs to the ubiquitin-activating E1 family. UBA5 subfamily.,

Research Area

Image Data



Western blot analysis of lysates from HepG2 and 293 cells, using UBA5 Antibody. The lane on the right is blocked with the synthesized peptide.



Western Blot analysis of various cells using Uba5 Polyclonal Antibody. Secondary antibody was diluted at 1:20000

Note

For research use only.