

**Product Name: TULA Rabbit Polyclonal Antibody**  
**Catalog #: APRab19430**



## Summary

<b>Production Name</b>	TULA Rabbit Polyclonal Antibody
<b>Description</b>	Rabbit Polyclonal Antibody
<b>Host</b>	Rabbit
<b>Application</b>	WB,ELISA
<b>Reactivity</b>	Human,Rat,Mouse

## Performance

<b>Conjugation</b>	Unconjugated
<b>Modification</b>	Unmodified
<b>Isotype</b>	IgG
<b>Clonality</b>	Polyclonal
<b>Form</b>	Liquid
<b>Storage</b>	Store at 4°C short term. Aliquot and store at -20°C long term. Avoid freeze/thaw cycles.
<b>Buffer</b>	Liquid in PBS containing 50% glycerol, 0.5% BSA and 0.02% New type preservative N.
<b>Purification</b>	Affinity purification

## Immunogen

<b>Gene Name</b>	UBASH3A UBASH3A; STS2; Ubiquitin-associated and SH3 domain-containing protein A; Cbl-interacting protein 4; CLIP4; Suppressor of T-cell receptor signaling 2; STS-2; T-cell ubiquitin ligand 1; TULA-1
<b>Alternative Names</b>	
<b>Gene ID</b>	53347.0
<b>SwissProt ID</b>	P57075. The antiserum was produced against synthesized peptide derived from human UBASH3A. AA range:311-360

## Application

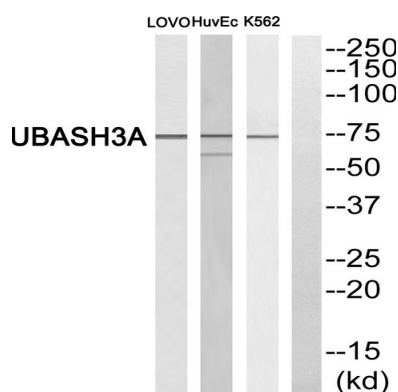
<b>Dilution Ratio</b>	WB 1:500-1:2000, ELISA 1:5000.Not yet tested in other applications.
<b>Molecular Weight</b>	75kDa

## Background

This gene encodes one of two family members belonging to the T-cell ubiquitin ligand (TULA) family. Both family members can negatively regulate T-cell signaling. This family member can facilitate growth factor withdrawal-induced apoptosis in T cells, which may occur via its interaction with AIF, an apoptosis-inducing factor. Alternative splicing of this gene results in multiple transcript variants. [provided by RefSeq, Aug 2011],function:Interferes with CBL-mediated down-regulation and degradation of receptor-type tyrosine kinases. Promotes accumulation of activated target receptors, such as T-cell receptors, EGFR and PDGFRB, on the cell surface.,similarity:Contains 1 SH3 domain.,similarity:Contains 1 UBA domain.,subunit:Homodimer or homooligomer. Interacts with CBL. Part of a complex containing CBL and activated EGFR. Interacts with ubiquitin and with mono-ubiquitinated proteins.,tissue specificity:Highest expression of UBASH3A in tissues belonging to the immune system, including spleen, peripheral blood leukocytes, thymus and bone marrow.,

## Research Area

## Image Data



## Note

For research use only.