

Summary

Production Name	TSSC1 Rabbit Polyclonal Antibody
Description	Rabbit Polyclonal Antibody
Host	Rabbit
Application	WB,ELISA
Reactivity	Human,Mouse,Rat,Monkey

Performance

Conjugation	Unconjugated
Modification	Unmodified
Isotype	IgG
Clonality	Polyclonal
Form	Liquid
Storage	Store at 4°C short term. Aliquot and store at -20°C long term. Avoid freeze/thaw cycles.
Buffer	Liquid in PBS containing 50% glycerol, 0.5% BSA and 0.02% New type preservative N.
Purification	Affinity purification

Immunogen

Gene Name	TSSC1
Alternative Names	TSSC1; Protein TSSC1; Tumor-suppressing STF cDNA 1 protein; Tumor-suppressing subchromosomal transferable fragment candidate gene 1 protein
Gene ID	7260.0
SwissProt ID	Q53HC9. The antiserum was produced against synthesized peptide derived from human TSSC1. AA range:291-340

Application

Dilution Ratio	WB 1:500-1:2000, ELISA 1:10000.Not yet tested in other applications.
Molecular Weight	48kDa

Background

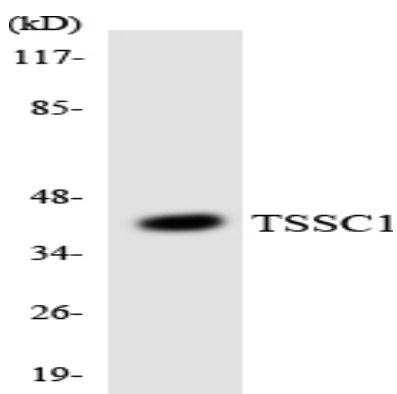
Product Name: TSSC1 Rabbit Polyclonal Antibody
Catalog #: AP Rab19373



This gene has been reported in PMID 9403053 as one of several tumor-suppressing subtransferable fragments located in the imprinted gene domain of 11p15.5, an important tumor-suppressor gene region. Alterations in this region have been associated with the Beckwith-Wiedemann syndrome, Wilms tumor, rhabdomyosarcoma, adrenocortical carcinoma, and lung, ovarian, and breast cancer. Alignment of this gene to genomic sequence data suggests that this gene resides on chromosome 2 rather than chromosome 11. [provided by RefSeq, Dec 2008], similarity: Contains 5 WD repeats.,

Research Area

Image Data



Western blot analysis of the lysates from HepG2 cells using TSSC1 antibody.

Note

For research use only.