

Product Name: TSA-1 Rabbit Polyclonal Antibody
Catalog #: APRab19352



Summary

Production Name	TSA-1 Rabbit Polyclonal Antibody
Description	Rabbit Polyclonal Antibody
Host	Rabbit
Application	IF-P,IF-F,ICC/IF,ELISA
Reactivity	Human,Rat,Mouse

Performance

Conjugation	Unconjugated
Modification	Unmodified
Isotype	IgG
Clonality	Polyclonal
Form	Liquid
Storage	Store at 4°C short term. Aliquot and store at -20°C long term. Avoid freeze/thaw cycles.
Buffer	Liquid in PBS containing 50% glycerol, 0.5% BSA and 0.02% New type preservative N.
Purification	Affinity purification

Immunogen

Gene Name	LY6E
Alternative Names	LY6E; 9804; RIGE; SCA2; TSA1; Lymphocyte antigen 6E; Ly-6E; Retinoic acid-induced gene E protein; RIG-E; Stem cell antigen 2; SCA-2; Thymic shared antigen 1; TSA-1
Gene ID	4061.0
SwissProt ID	Q16553. The antiserum was produced against synthesized peptide derived from human LY6E. AA range:17-66

Application

Dilution Ratio	IF-P/IF-F/ICC/IF 1:200-1:1000, ELISA 1:20000. Not yet tested in other applications.
Molecular Weight	

Background

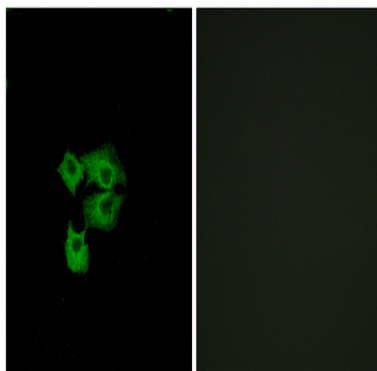
Product Name: TSA-1 Rabbit Polyclonal Antibody
Catalog #: APRab19352



induction:By retinoic acid; in promyelocytic leukemia NB4 and in myeloblast HL-60 cell lines. Activated by IFN-alpha in monocytic cell line U-937 and in peripheral blood monocyte cells.,similarity:Contains 1 UPAR/Ly6 domain.,tissue specificity:Widely expressed, predominantly in liver, kidney, ovary, spleen and peripheral blood Leukocytes.,induction:By retinoic acid; in promyelocytic leukemia NB4 and in myeloblast HL-60 cell lines. Activated by IFN-alpha in monocytic cell line U-937 and in peripheral blood monocyte cells.,similarity:Contains 1 UPAR/Ly6 domain.,tissue specificity:Widely expressed, predominantly in liver, kidney, ovary, spleen and peripheral blood Leukocytes.,

Research Area

Image Data



Immunofluorescence analysis of A549 cells, using LY6E Antibody. The picture on the right is blocked with the synthesized peptide.

Note

For research use only.