

Summary

Production Name	TRAF3 Rabbit Polyclonal Antibody
Description	Rabbit Polyclonal Antibody
Host	Rabbit
Application	WB,ELISA
Reactivity	Human,Mouse

Performance

Conjugation	Unconjugated
Modification	Unmodified
Isotype	IgG
Clonality	Polyclonal
Form	Liquid
Storage	Store at 4°C short term. Aliquot and store at -20°C long term. Avoid freeze/thaw cycles.
Buffer	Liquid in PBS containing 50% glycerol, 0.5% BSA and 0.02% New type preservative N.
Purification	Affinity purification

Immunogen

Gene Name	TRAF3
Alternative Names	TRAF3; CAP1; CRAF1; TNF receptor-associated factor 3; CAP-1; CD40 receptor-associated factor 1; CRAF1; CD40-binding protein; CD40BP; LMP1-associated protein 1; LAP1
Gene ID	7187.0
SwissProt ID	Q13114.The antiserum was produced against synthesized peptide derived from human TRAF3. AA range:240-289

Application

Dilution Ratio	WB 1:500-1:2000, ELISA 1:20000.Not yet tested in other applications.
Molecular Weight	64kDa

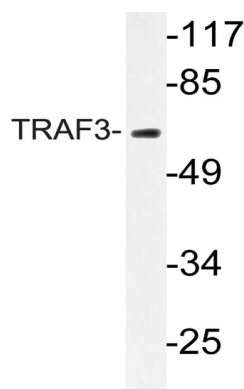
Background

TNF receptor associated factor 3 (TRAF3) Homo sapiens The protein encoded by this gene is a member of the TNF receptor associated factor (TRAF) protein family. TRAF proteins associate with, and mediate the signal transduction from, members of the TNF receptor (TNFR) superfamily. This protein participates in the signal transduction of CD40, a TNFR family member important for the activation of the immune response. This protein is found to be a critical component of the lymphotoxin-beta receptor (LTbetaR) signaling complex, which induces NF-kappaB activation and cell death initiated by LTbeta ligation. Epstein-Barr virus encoded latent infection membrane protein-1 (LMP1) can interact with this and several other members of the TRAF family, which may be essential for the oncogenic effects of LMP1. Several alternatively spliced transcript variants encoding three distinct isoforms have been reported. [provided by RefSeq, Dec 2010], caution: The sequence shown here is derived from an Ensembl automatic analysis pipeline and should be considered as preliminary data., domain: The MATH/TRAF domain binds to receptor cytoplasmic domains., function: Adapter protein and signal transducer that links members of the tumor necrosis factor receptor family to different signaling pathways by association with the receptor cytoplasmic domain and kinases. Seems to be involved in activation of NF-kappa-B and JNK and in apoptosis. Is regulated by TANK/ITRAF which competes with TNFRSF5/CD40 for binding. Seems to play a role T-cell dependent immune responses., similarity: Contains 1 MATH domain., similarity: Contains 1 RING-type zinc finger., similarity: Contains 2 TRAF-type zinc fingers., subunit: Homotrimer (Probable). Heteromer with TRAF5 (By similarity). Binds to TNFRSF5/CD40. Associates with LTBR/TNFRSF3, TNFRSF4, TNFRSF8/CD30, TNFRSF17/BCMA and EDAR, MAP3K5, MAP3K14, and TRAF-interacting protein TRIP and TRAF and TNF receptor associated protein TTRAP. Binds to TANK/ITRAF and TRAF3IP1. Interacts with TICAM1 (By similarity). Interacts with OTUD5.,

Research Area

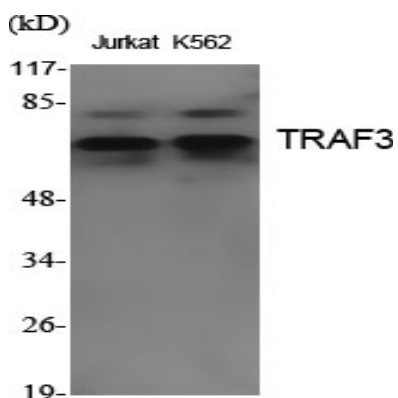
Toll_Like; RIG-I-like receptor; Pathways in cancer; Small cell lung cancer;

Image Data

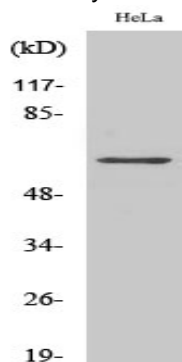


Western blot analysis of lysate from HeLa cells, using TRAF3 antibody.

Product Name: TRAF3 Rabbit Polyclonal Antibody
Catalog #: APRab19185



Western Blot analysis of various cells using TRAF3 Polyclonal Antibody. Secondary antibody was diluted at 1:20000



Western Blot analysis of COLO205 cells using TRAF3 Polyclonal Antibody. Secondary antibody was diluted at 1:20000

Note

For research use only.