

Product Name: TOPRS Rabbit Polyclonal Antibody
Catalog #: APRab19132



Summary

Production Name	TOPRS Rabbit Polyclonal Antibody
Description	Rabbit Polyclonal Antibody
Host	Rabbit
Application	WB,ELISA
Reactivity	Human,Mouse

Performance

Conjugation	Unconjugated
Modification	Unmodified
Isotype	IgG
Clonality	Polyclonal
Form	Liquid
Storage	Store at 4°C short term. Aliquot and store at -20°C long term. Avoid freeze/thaw cycles.
Buffer	Liquid in PBS containing 50% glycerol, and 0.02% New type preservative N.
Purification	Affinity purification

Immunogen

Gene Name	TOPORS LUN TP53BPL
Alternative Names	
Gene ID	10210.0
SwissProt ID	Q9NS56. Synthesized peptide derived from part region of human protein

Application

Dilution Ratio	WB 1:500-2000, ELISA 1:5000-20000
Molecular Weight	114kDa

Background

This gene encodes a nuclear protein which is serine and arginine rich, and contains a RING-type zinc finger domain. It is highly expressed in the testis, and functions as an ubiquitin-protein E3 ligase. Mutations in this gene are associated with

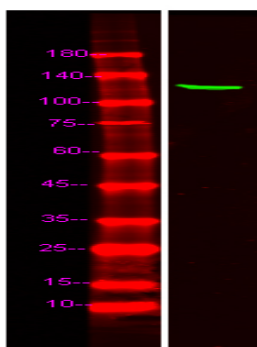
Product Name: TOPRS Rabbit Polyclonal Antibody
Catalog #: AP Rab19132



retinitis pigmentosa type 31. Alternatively spliced transcript variants, encoding different isoforms, have been observed for this locus. [provided by RefSeq, Sep 2010],caution:Was originally (PubMed:11278651) thought to bind to the palindromic consensus sequence 5'-TCCCAGCACTTTGGGA-3' and to regulate the transcription of numerous genes in the lung.,disease:Defects in TOPORS are the cause of retinitis pigmentosa type 31 (RP31) [MIM:609923]. RP leads to degeneration of retinal photoreceptor cells. Patients typically have night vision blindness and loss of midperipheral visual field. As their condition progresses, they lose their far peripheral visual field and eventually central vision as well. RP31 inheritance is autosomal dominant.,function:Functions as an ubiquitin-protein E3 ligase and as an E3 SUMO1-protein ligase. Can both ubiquitinate and sumoylate p53.,induction:By genotoxic agents such as cisplatin and camptothecin.,PTM:Sumoylated.,similarity:Contains 1 RING-type zinc finger.,subcellular location:Localizes to discrete nuclear foci which partly overlap with PML nuclear bodies.,subunit:Interacts with PARK7/DJ-1 (By similarity). Interacts with TOP1. Interacts with p53. Interacts with the SUMO1 conjugating enzyme UBE2I. Interacts with SUMO1.,tissue specificity:Expressed at highest levels in testis and at lower levels in adrenal gland, bone marrow, brain, colon, heart, kidney, liver, muscle, ovary, pancreas, placenta, prostate, skeletal muscle, skin, small intestine, spleen, stomach, testis, thymus, thyroid and uterus. Expressed in the alveolar epithelium of the lung. Expression is commonly decreased in colon adenocarcinomas and lung cancers.,

Research Area

Image Data



Western Blot analysis of Hela lysis, using primary antibody at 1:1000 dilution. Secondary antibody was diluted at 1:10000

Note

For research use only.