

Product Name: Topo III α Rabbit Polyclonal Antibody
Catalog #: APRab19127



Summary

Production Name	Topo III α Rabbit Polyclonal Antibody
Description	Rabbit Polyclonal Antibody
Host	Rabbit
Application	WB,ELISA
Reactivity	Human,Mouse

Performance

Conjugation	Unconjugated
Modification	Unmodified
Isotype	IgG
Clonality	Polyclonal
Form	Liquid
Storage	Store at 4°C short term. Aliquot and store at -20°C long term. Avoid freeze/thaw cycles.
Buffer	Liquid in PBS containing 50% glycerol, 0.5% BSA and 0.02% New type preservative N.
Purification	Affinity purification

Immunogen

Gene Name	TOP3A
Alternative Names	TOP3A; TOP3; DNA topoisomerase 3-alpha; DNA topoisomerase III alpha
Gene ID	7156.0
SwissProt ID	Q13472. Synthesized peptide derived from Topo III α . at AA range: 350-430

Application

Dilution Ratio	WB 1:500-1:2000, ELISA 1:10000.Not yet tested in other applications.
Molecular Weight	115kDa

Background

This gene encodes a DNA topoisomerase, an enzyme that controls and alters the topologic states of DNA during transcription. This enzyme catalyzes the transient breaking and rejoining of a single strand of DNA which allows the strands

Product Name: Topo III α Rabbit Polyclonal Antibody
Catalog #: APRab19127

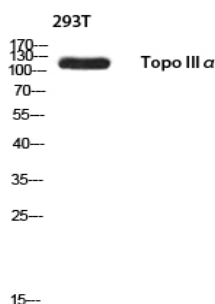


to pass through one another, thus reducing the number of supercoils and altering the topology of DNA. This enzyme forms a complex with BLM which functions in the regulation of recombination in somatic cells. Alternative splicing results in multiple transcript variants encoding different isoforms. [provided by RefSeq, Mar 2016],catalytic activity:ATP-independent breakage of single-stranded DNA, followed by passage and rejoining.,function:Reduces the number of supercoils in a highly negatively supercoiled DNA. Essential component of the RMI complex, a complex that plays an important role in the processing of homologous recombination intermediates to limit DNA crossover formation in cells.,similarity:Belongs to the prokaryotic type I/III topoisomerase family.,subunit:Directly interacts with BLM and RMI1. Component of the RMI complex, containing at least TOP3A, RMI1 and RMI2. The RMI complex interacts with BLM.,tissue specificity:High expression is found in testis, heart, skeletal muscle and pancreas.,

Research Area

Homologous recombination;

Image Data



Western blot analysis of 293T using Topo III α antibody. Antibody was diluted at 1:500. Secondary antibody was diluted at 1:20000 cells nucleus extracted by Minute TM Cytoplasmic and Nuclear Fractionation kit (SC-003, Invent biotech, MN, USA) .

Note

For research use only.