

Product Name: TOB1 Rabbit Polyclonal Antibody
Catalog #: APRab19116



Summary

Production Name	TOB1 Rabbit Polyclonal Antibody
Description	Rabbit Polyclonal Antibody
Host	Rabbit
Application	WB,IHC-P,IF-P,IF-F,ICC/IF,ELISA
Reactivity	Human,Mouse,Rat

Performance

Conjugation	Unconjugated
Modification	Unmodified
Isotype	IgG
Clonality	Polyclonal
Form	Liquid
Storage	Store at 4°C short term. Aliquot and store at -20°C long term. Avoid freeze/thaw cycles.
Buffer	Liquid in PBS containing 50% glycerol, 0.5% BSA and 0.02% New type preservative N.
Purification	Affinity purification

Immunogen

Gene Name	TOB1
Alternative Names	TOB1; TOB; TROB1; Protein Tob1; Transducer of erbB-2 1
Gene ID	10140.0
SwissProt ID	P50616.The antiserum was produced against synthesized peptide derived from human TOB1. AA range:130-179

Application

Dilution Ratio	WB 1:500-1:2000, IHC-P 1:100-1:300, ELISA 1:10000, IF-P/IF-F/ICC/IF 1:50-200
Molecular Weight	40kDa

Background

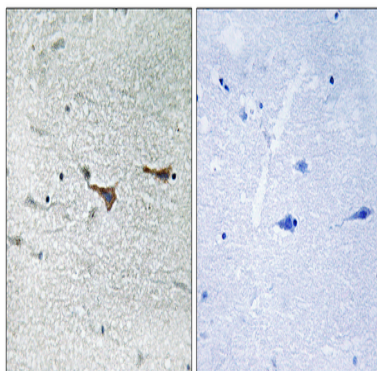
Product Name: TOB1 Rabbit Polyclonal Antibody
Catalog #: AP Rab19116



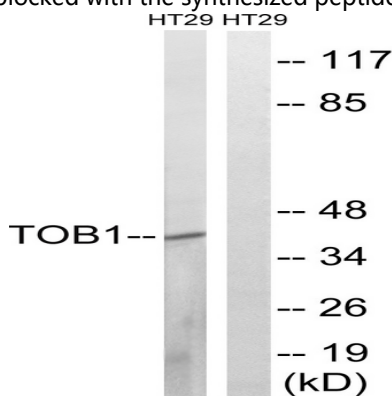
This gene encodes a member of the transducer of erbB-2 /B-cell translocation gene protein family. Members of this family are anti-proliferative factors that have the potential to regulate cell growth. The encoded protein may function as a tumor suppressor. Alternate splicing results in multiple transcript variants. [provided by RefSeq, Aug 2011],function:Anti-proliferative protein that interacts with the erbB-2 receptor tyrosine kinase. May physically and/or functionally interact with protein-tyrosine kinase receptors.,PTM:Phosphorylated on Ser and Thr residues.,similarity:Belongs to the BTG family.,subunit:Interacts with CNOT7.,tissue specificity:Ubiquitous.,

Research Area

Image Data



Immunohistochemistry analysis of paraffin-embedded human brain tissue, using TOB1 Antibody. The picture on the right is blocked with the synthesized peptide.



Western blot analysis of lysates from HT-29 cells, treated with serum 20% 15', using TOB1 Antibody. The lane on the right is blocked with the synthesized peptide.

Note

For research use only.