

## Summary

<b>Production Name</b>	TNF- $\beta$ Rabbit Polyclonal Antibody
<b>Description</b>	Rabbit Polyclonal Antibody
<b>Host</b>	Rabbit
<b>Application</b>	WB,ELISA
<b>Reactivity</b>	Human,Mouse,Rat,Monkey

## Performance

<b>Conjugation</b>	Unconjugated
<b>Modification</b>	Unmodified
<b>Isotype</b>	IgG
<b>Clonality</b>	Polyclonal
<b>Form</b>	Liquid
<b>Storage</b>	Store at 4°C short term. Aliquot and store at -20°C long term. Avoid freeze/thaw cycles.
<b>Buffer</b>	Liquid in PBS containing 50% glycerol, 0.5% BSA and 0.02% New type preservative N.
<b>Purification</b>	Affinity purification

## Immunogen

<b>Gene Name</b>	LTA
<b>Alternative Names</b>	LTA; TNFB; TNFSF1; Lymphotoxin-alpha; LT-alpha; TNF-beta; Tumor necrosis factor ligand superfamily member 1
<b>Gene ID</b>	4049.0
<b>SwissProt ID</b>	P01374.The antiserum was produced against synthesized peptide derived from human TNF-beta. AA range:17-66

## Application

<b>Dilution Ratio</b>	WB 1:500-1:2000, ELISA 1:40000.Not yet tested in other applications.
<b>Molecular Weight</b>	22kDa

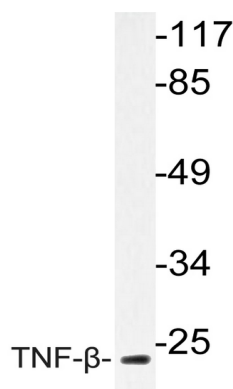
## Background

The encoded protein, a member of the tumor necrosis factor family, is a cytokine produced by lymphocytes. The protein is highly inducible, secreted, and forms heterotrimers with lymphotoxin-beta which anchor lymphotoxin-alpha to the cell surface. This protein also mediates a large variety of inflammatory, immunostimulatory, and antiviral responses, is involved in the formation of secondary lymphoid organs during development and plays a role in apoptosis. Genetic variations in this gene are associated with susceptibility to leprosy type 4, myocardial infarction, non-Hodgkin's lymphoma, and psoriatic arthritis. Alternatively spliced transcript variants have been observed for this gene. [provided by RefSeq, Jul 2012],disease:Genetic variations in LTA are associated with susceptibility to leprosy type 4 (LPRS4) [MIM:610988]; also known as susceptibility to age-dependent leprosy. Leprosy is a chronic infectious disease of peripheral sensory nerves caused by Mycobacterium leprae.,disease:Genetic variations in LTA are associated with susceptibility to psoriatic arthritis [MIM:607507]. Psoriasis is a chronic inflammatory dermatosis that affects approximately 2% of the population. It is characterized by red, scaly skin lesions that are usually found on the scalp, elbows, and knees, and may be associated with severe arthritis. Psoriatic arthritis has been defined as an inflammatory arthritis usually without any rheumatoid factor in serum (seronegative arthritis) associated with psoriasis.,function:Cytokine that in its homotrimeric form binds to TNFRSF1A/TNFR1, TNFRSF1B/TNFR1 and TNFRSF14/HVEM. In its heterotrimeric form with LTB binds to TNFRSF3/LTBR. Lymphotoxin is produced by lymphocytes and cytotoxic for a wide range of tumor cells in vitro and in vivo.,online information:Lymphotoxin entry,online information:The Singapore human mutation and polymorphism database,similarity:Belongs to the tumor necrosis factor family.,subcellular location:The homotrimer is secreted. The heterotrimer is membrane-associated.,subunit:Homotrimer, and heterotrimer of either two LTB and one LTA subunits or (less prevalent) two LTA and one LTB subunits.,

## Research Area

Cytokine-cytokine receptor interaction;Antigen processing and presentation;Type I diabetes mellitus;

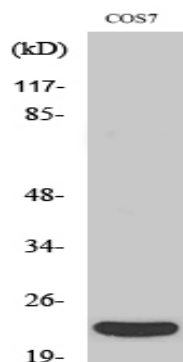
## Image Data



Western blot analysis of lysate from COS-7 cell, using TNF- $\beta$  antibody.

**Product Name: TNF- $\beta$  Rabbit Polyclonal Antibody**  
**Catalog #: APRab19097**

---



Western Blot analysis of various cells using TNF- $\beta$  Polyclonal Antibody diluted at 1 : 1000. Secondary antibody was diluted at 1:20000

### **Note**

For research use only.