

**Product Name: TMEM185A Rabbit Polyclonal Antibody**  
**Catalog #: AP Rab19053**



## Summary

<b>Production Name</b>	TMEM185A Rabbit Polyclonal Antibody
<b>Description</b>	Rabbit Polyclonal Antibody
<b>Host</b>	Rabbit
<b>Application</b>	WB,IHC-P,IF-P,IF-F,ICC/IF,ELISA
<b>Reactivity</b>	Human,Mouse

## Performance

<b>Conjugation</b>	Unconjugated
<b>Modification</b>	Unmodified
<b>Isotype</b>	IgG
<b>Clonality</b>	Polyclonal
<b>Form</b>	Liquid
<b>Storage</b>	Store at 4°C short term. Aliquot and store at -20°C long term. Avoid freeze/thaw cycles.
<b>Buffer</b>	Liquid in PBS containing 50% glycerol, 0.5% BSA and 0.02% New type preservative N.
<b>Purification</b>	Affinity purification

## Immunogen

<b>Gene Name</b>	TMEM185A
<b>Alternative Names</b>	TMEM185A; CXorf13; FAM11A; Transmembrane protein 185A; Protein FAM11A
<b>Gene ID</b>	84548.0
<b>SwissProt ID</b>	Q8NFB2.The antiserum was produced against synthesized peptide derived from human TMEM185A. AA range:290-339

## Application

<b>Dilution Ratio</b>	WB 1:500-1:2000, IHC-P 1:100-1:300, IF-P/IF-F/ICC/IF 1:200-1:1000, ELISA 1:20000.Not yet tested in other applications.
<b>Molecular Weight</b>	41kDa

**Product Name: TMEM185A Rabbit Polyclonal Antibody**  
**Catalog #: APRab19053**

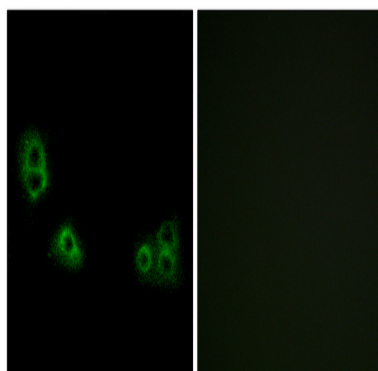


## Background

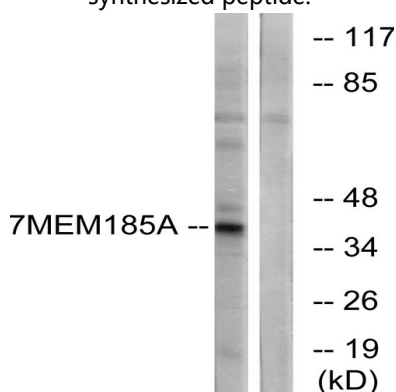
The protein encoded by this gene is predicted to be a transmembrane protein. This gene is best known for localizing to the CpG island of the fragile site FRAXF. The 5' untranslated region of this gene contains a CGG trinucleotide repeat sequence that normally consists of 7-40 tandem CGG repeats but which can expand to greater than 300 repeats. Methylation of the CpG island leads to transcriptional silencing of this gene, but neither the silencing nor an expanded repeat region appear to manifest itself in a clear phenotypic manner. Alternative splicing results in multiple transcript variants. A pseudogene of this gene has been defined on the X chromosome. [provided by RefSeq, Aug 2013],similarity:Belongs to the TMEM185 family.,

## Research Area

## Image Data

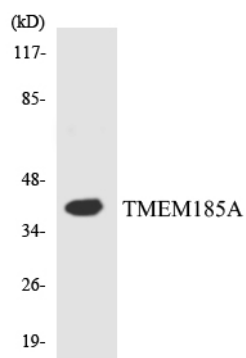


Immunofluorescence analysis of MCF7 cells, using TMEM185A Antibody. The picture on the right is blocked with the synthesized peptide.



Western blot analysis of lysates from K562 cells, using TMEM185A Antibody. The lane on the right is blocked with the synthesized peptide.

**Product Name: TMEM185A Rabbit Polyclonal Antibody**  
**Catalog #: APRab19053**



Western blot analysis of the lysates from HT-29 cells using TMEM185A antibody.

### **Note**

For research use only.