

Product Name: TIMAP Rabbit Polyclonal Antibody
Catalog #: APRab18945



Summary

Production Name	TIMAP Rabbit Polyclonal Antibody
Description	Rabbit Polyclonal Antibody
Host	Rabbit
Application	WB,IHC-P
Reactivity	Human,Mouse

Performance

Conjugation	Unconjugated
Modification	Unmodified
Isotype	IgG
Clonality	Polyclonal
Form	Liquid
Storage	Store at 4°C short term. Aliquot and store at -20°C long term. Avoid freeze/thaw cycles.
Buffer	Liquid in PBS containing 50% glycerol, 0.5% BSA and 0.02% New type preservative N.
Purification	Affinity purification

Immunogen

Gene Name	PPP1R16B PPP1R16B; ANKRD4; KIAA0823; Protein phosphatase 1 regulatory inhibitor subunit 16B; Ankyrin repeat domain-containing protein 4; CAAX box protein TIMAP; TGF-beta-inhibited membrane-associated protein; hTIMAP
Alternative Names	
Gene ID	26051.0
SwissProt ID	Q96T49. The antiserum was produced against synthesized peptide derived from human PPP1R16B. AA range:364-413

Application

Dilution Ratio	WB 1:500-2000, IHC-P 1:50-300
Molecular Weight	64kDa

Product Name: TIMAP Rabbit Polyclonal Antibody
Catalog #: APRab18945

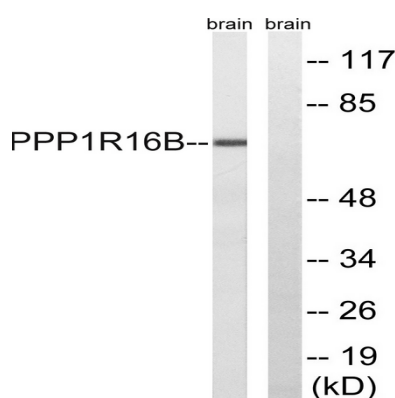


Background

The protein encoded by this gene is membrane-associated and contains five ankyrin repeats, a protein phosphatase-1-interacting domain, and a carboxy-terminal CAAX box domain. Synthesis of the encoded protein is inhibited by transforming growth factor beta-1. The protein may bind to the membrane through its CAAX box domain and may act as a signaling molecule through interaction with protein phosphatase-1. Alternative splicing results in multiple transcript variants encoding different isoforms that may undergo similar processing to generate mature protein. [provided by RefSeq, Sep 2015],function:May be a downstream target for TGF-beta1 signaling cascade in endothelial cells.,induction:Inhibited by TGF-beta1.,similarity:Contains 5 ANK repeats.,subunit:Binds PP1.,tissue specificity:Highly expressed in vascular endothelium, CNS, lung, spleen, kidney and testis.,

Research Area

Image Data



Western blot analysis of lysates from mouse brain, using PPP1R16B Antibody. The lane on the right is blocked with the synthesized peptide.

Note

For research use only.