

## Summary

<b>Production Name</b>	TIF1 $\alpha$ Rabbit Polyclonal Antibody
<b>Description</b>	Rabbit Polyclonal Antibody
<b>Host</b>	Rabbit
<b>Application</b>	WB,IHC-P,IF-P,IF-F,ICC/IF,ELISA
<b>Reactivity</b>	Human,Mouse

## Performance

<b>Conjugation</b>	Unconjugated
<b>Modification</b>	Unmodified
<b>Isotype</b>	IgG
<b>Clonality</b>	Polyclonal
<b>Form</b>	Liquid
<b>Storage</b>	Store at 4°C short term. Aliquot and store at -20°C long term. Avoid freeze/thaw cycles.
<b>Buffer</b>	Liquid in PBS containing 50% glycerol, 0.5% BSA and 0.02% New type preservative N.
<b>Purification</b>	Affinity purification

## Immunogen

<b>Gene Name</b>	TRIM24
<b>Alternative Names</b>	TRIM24; RNF82; TIF1; TIF1A; Transcription intermediary factor 1-alpha; TIF1-alpha; E3 ubiquitin-protein ligase TRIM24; RING finger protein 82; Tripartite motif-containing protein 24
<b>Gene ID</b>	8805.0
<b>SwissProt ID</b>	O15164.The antiserum was produced against synthesized peptide derived from human TRIM24. AA range:1001-1050

## Application

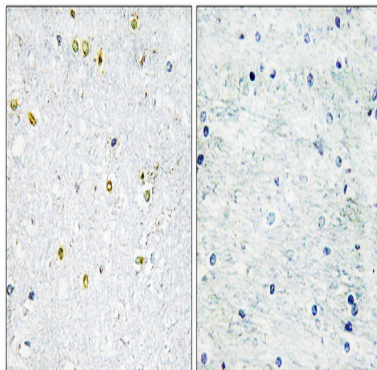
<b>Dilution Ratio</b>	WB 1:500-1:2000, IHC-P 1:100-1:300, ELISA 1:20000, IF-P/IF-F/ICC/IF 1:50-200
<b>Molecular Weight</b>	117kDa

## Background

The protein encoded by this gene mediates transcriptional control by interaction with the activation function 2 (AF2) region of several nuclear receptors, including the estrogen, retinoic acid, and vitamin D3 receptors. The protein localizes to nuclear bodies and is thought to associate with chromatin and heterochromatin-associated factors. The protein is a member of the tripartite motif (TRIM) family. The TRIM motif includes three zinc-binding domains - a RING, a B-box type 1 and a B-box type 2 - and a coiled-coil region. Two alternatively spliced transcript variants encoding different isoforms have been described for this gene. [provided by RefSeq, Jul 2008],disease:A chromosomal aberration involving TIF1 is a cause of thyroid papillary carcinoma (PACT) [MIM:188550]. Translocation t(7;10)(q32;q11) with RET. The translocation generates the TIF1/RET (PTC6) oncogene.,function:Interacts selectively in vitro with the AF2-activating domain of the estrogen receptors. Association with DNA-bound estrogen receptors requires the presence of estradiol.,PTM:Phosphorylated upon DNA damage, probably by ATM or ATR.,similarity:Contains 1 bromo domain.,similarity:Contains 1 PHD-type zinc finger.,similarity:Contains 1 RING-type zinc finger.,similarity:Contains 2 B box-type zinc fingers.,subunit:Interacts with CBX1 and CBX3 (By similarity). Interacts with NR3C2.,

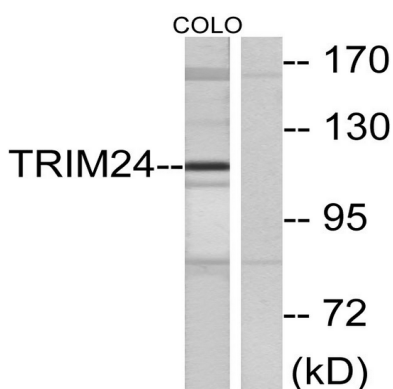
## Research Area

## Image Data

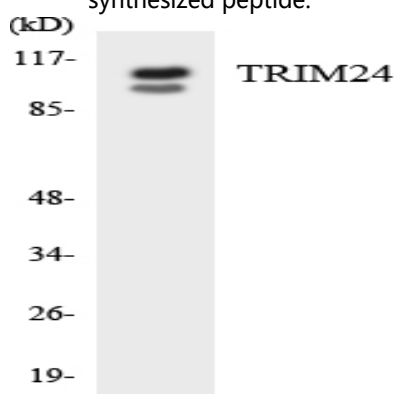


Immunohistochemistry analysis of paraffin-embedded human brain tissue, using TRIM24 Antibody. The picture on the right is blocked with the synthesized peptide.

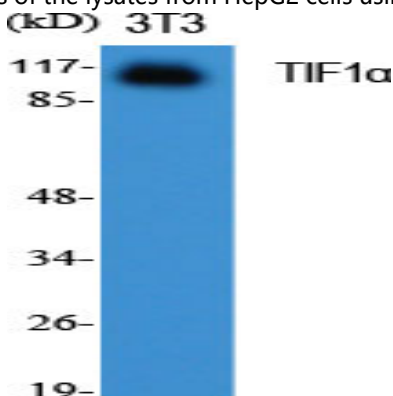
**Product Name: TIF1 $\alpha$  Rabbit Polyclonal Antibody**  
**Catalog #: APRab18928**



Western blot analysis of lysates from COLO cells, using TRIM24 Antibody. The lane on the right is blocked with the synthesized peptide.

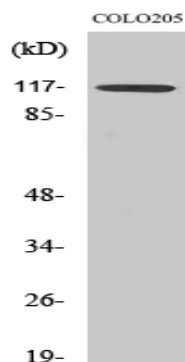


Western blot analysis of the lysates from HepG2 cells using TRIM24 antibody.



Western Blot analysis of various cells using TIF1 $\alpha$  Polyclonal Antibody diluted at 1: 1000

**Product Name: TIF1 $\alpha$  Rabbit Polyclonal Antibody**  
**Catalog #: APRab18928**



Western Blot analysis of COLO205 cells using TIF1 $\alpha$  Polyclonal Antibody diluted at 1: 1000. Secondary antibody was diluted at 1:20000

### **Note**

For research use only.