

**Product Name: THC2 Rabbit Polyclonal Antibody**  
**Catalog #: APRab18876**



## Summary

<b>Production Name</b>	THC2 Rabbit Polyclonal Antibody
<b>Description</b>	Rabbit Polyclonal Antibody
<b>Host</b>	Rabbit
<b>Application</b>	WB,IHC-P,IF-P,IF-F,ICC/IF,ELISA
<b>Reactivity</b>	Human,Mouse

## Performance

<b>Conjugation</b>	Unconjugated
<b>Modification</b>	Unmodified
<b>Isotype</b>	IgG
<b>Clonality</b>	Polyclonal
<b>Form</b>	Liquid
<b>Storage</b>	Store at 4°C short term. Aliquot and store at -20°C long term. Avoid freeze/thaw cycles.
<b>Buffer</b>	Liquid in PBS containing 50% glycerol, 0.5% BSA and 0.02% New type preservative N.
<b>Purification</b>	Affinity purification

## Immunogen

<b>Gene Name</b>	MASTL
<b>Alternative Names</b>	MASTL; GW; GWL; THC2; Serine/threonine-protein kinase greatwall; GW; GWL; hGWL; Microtubule-associated serine/threonine-protein kinase-like; MAST-L
<b>Gene ID</b>	84930.0
<b>SwissProt ID</b>	Q96GX5.The antiserum was produced against synthesized peptide derived from human MASTL. AA range:821-870

## Application

<b>Dilution Ratio</b>	WB 1:500-1:2000, IHC-P 1:100-1:300, ELISA 1:20000, IF-P/IF-F/ICC/IF 1:50-200
<b>Molecular Weight</b>	97kDa

**Product Name: THC2 Rabbit Polyclonal Antibody**  
**Catalog #: APRab18876**



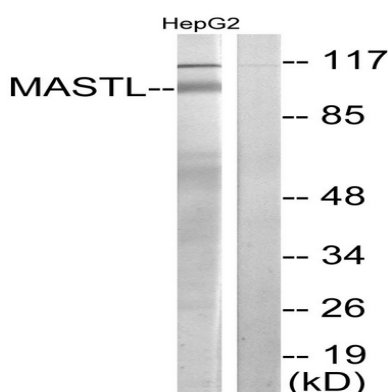
## Background

This gene encodes a microtubule-associated serine/threonine kinase. Mutations at this locus have been associated with autosomal dominant thrombocytopenia, also known as thrombocytopenia-2. Alternatively spliced transcript variants have been described for this locus. [provided by RefSeq, Feb 2010],catalytic activity:ATP + a protein = ADP + a phosphoprotein.,disease:Defects in MASTL are the cause of thrombocytopenia type 2 (THC2) [MIM:188000].

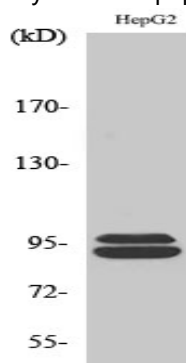
Thrombocytopenia is defined by a decrease in the number of platelets in circulating blood, resulting in the potential for increased bleeding and decreased ability for clotting.,function:Putative serine/threonine kinase which may be involved in megakaryocyte differentiation.,similarity:Belongs to the protein kinase superfamily. AGC Ser/Thr protein kinase family.,similarity:Contains 1 AGC-kinase C-terminal domain.,similarity:Contains 1 protein kinase domain.,

## Research Area

## Image Data



Western blot analysis of lysates from HepG2 cells, using MASTL Antibody. The lane on the right is blocked with the synthesized peptide.



Western Blot analysis of various cells using THC2 Polyclonal Antibody

**Product Name: THC2 Rabbit Polyclonal Antibody**  
**Catalog #: APRab18876**

---



**Note**

For research use only.