

## Summary

<b>Production Name</b>	TH Rabbit Polyclonal Antibody
<b>Description</b>	Rabbit Polyclonal Antibody
<b>Host</b>	Rabbit
<b>Application</b>	WB,IHC-P,IF-P,IF-F,ICC/IF,ELISA
<b>Reactivity</b>	Rat

## Performance

<b>Conjugation</b>	Unconjugated
<b>Modification</b>	Unmodified
<b>Isotype</b>	IgG
<b>Clonality</b>	Polyclonal
<b>Form</b>	Liquid
<b>Storage</b>	Store at 4°C short term. Aliquot and store at -20°C long term. Avoid freeze/thaw cycles.
<b>Buffer</b>	Liquid in PBS containing 50% glycerol, 0.5% BSA and 0.02% New type preservative N.
<b>Purification</b>	Affinity purification

## Immunogen

<b>Gene Name</b>	TH
<b>Alternative Names</b>	TH; TYH; Tyrosine 3-monooxygenase; Tyrosine 3-hydroxylase; TH
<b>Gene ID</b>	25085.0
<b>SwissProt ID</b>	P04177.The antiserum was produced against synthesized peptide derived from human Tyrosine Hydroxylase. AA range:5-54

## Application

<b>Dilution Ratio</b>	WB 1:500-1:2000.IHC-P 1:50-300, ELISA 1:20000, IF-P/IF-F/ICC/IF 1:50-200
<b>Molecular Weight</b>	58kDa

## Background

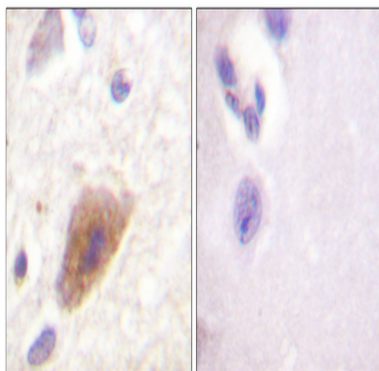
**Product Name: TH Rabbit Polyclonal Antibody**  
**Catalog #: AP Rab18869**



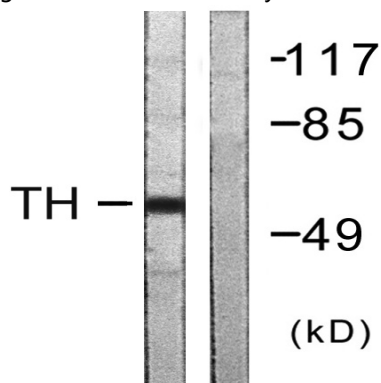
Tyrosine 3-monooxygenase encoded by TH is involved in the conversion of tyrosine to dopamine. It is the rate-limiting enzyme in the synthesis of catecholamines, hence plays a key role in the physiology of adrenergic neurons. Mutations in this gene have been associated with autosomal recessive Segawa syndrome. Alternatively spliced transcript variants encoding different isoforms have been noted for this gene.

## Research Area

## Image Data



Immunohistochemistry analysis of paraffin-embedded human brain tissue, using Tyrosine Hydroxylase Antibody. The picture on the right is blocked with the synthesized peptide.



Western blot analysis of lysates from COLO205 cells, using Tyrosine Hydroxylase Antibody. The lane on the right is blocked with the synthesized peptide.

**Product Name: TH Rabbit Polyclonal Antibody**  
**Catalog #: APRab18869**



Western Blot analysis of various cells using TH Polyclonal Antibody

### **Note**

For research use only.