

## Summary

<b>Production Name</b>	TGFβ RIII Rabbit Polyclonal Antibody
<b>Description</b>	Rabbit Polyclonal Antibody
<b>Host</b>	Rabbit
<b>Application</b>	WB,IF-P,IF-F,ICC/IF,ELISA
<b>Reactivity</b>	Human,Mouse,Rat

## Performance

<b>Conjugation</b>	Unconjugated
<b>Modification</b>	Unmodified
<b>Isotype</b>	IgG
<b>Clonality</b>	Polyclonal
<b>Form</b>	Liquid
<b>Storage</b>	Store at 4°C short term. Aliquot and store at -20°C long term. Avoid freeze/thaw cycles.
<b>Buffer</b>	Liquid in PBS containing 50% glycerol, 0.5% BSA and 0.02% New type preservative N.
<b>Purification</b>	Affinity purification

## Immunogen

<b>Gene Name</b>	TGFB3 TGFB3; Transforming growth factor beta receptor type 3; TGF-beta receptor type 3;
<b>Alternative Names</b>	TGFR-3; Betaglycan; Transforming growth factor beta receptor III; TGF-beta receptor type III
<b>Gene ID</b>	7049.0
<b>SwissProt ID</b>	Q03167.The antiserum was produced against synthesized peptide derived from human TGF beta Receptor III. AA range:801-850

## Application

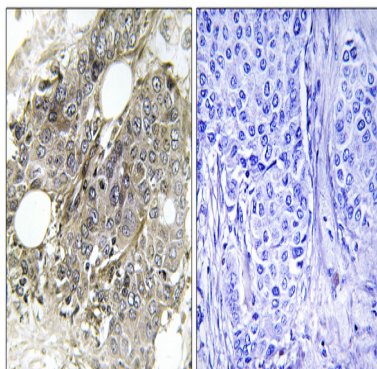
<b>Dilution Ratio</b>	WB 1:500-2000, IHC 1:100-1:300, ELISA 1:5000, IF-P/IF-F/ICC/IF 1:50-200
<b>Molecular Weight</b>	

## Background

This locus encodes the transforming growth factor (TGF)-beta type III receptor. The encoded receptor is a membrane proteoglycan that often functions as a co-receptor with other TGF-beta receptor superfamily members. Ectodomain shedding produces soluble TGFBR3, which may inhibit TGFB signaling. Decreased expression of this receptor has been observed in various cancers. Alternatively spliced transcript variants encoding different isoforms have been identified for this gene.[provided by RefSeq, Sep 2010],function: Binds to TGF-beta. Could be involved in capturing and retaining TGF-beta for presentation to the signaling receptors.,PTM: Extensively modified by glycosaminoglycan groups (GAG),similarity: Contains 1 ZP domain.,subcellular location: Exists both as a membrane-bound form and as soluble form in serum and in the extracellular matrix.,subunit: Interacts with TCTEX1D4.,

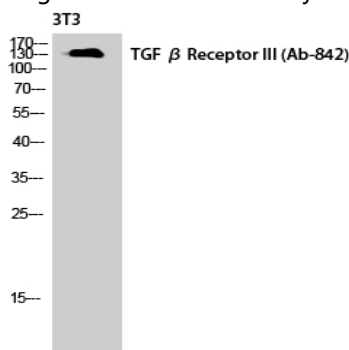
## Research Area

## Image Data



Immunohistochemistry analysis of paraffin-embedded human breast carcinoma tissue, using TGF beta Receptor III Antibody.

The picture on the right is blocked with the synthesized peptide.



Western Blot analysis of NIH-3T3 cells using TGF $\beta$  RIII Polyclonal Antibody diluted at 1: 1000

**Product Name: TGF $\beta$  RIII Rabbit Polyclonal Antibody**  
**Catalog #: APRab18857**

---



**Note**

For research use only.