

Product Name: TFII β Rabbit Polyclonal Antibody
Catalog #: APRab18831



Summary

Production Name	TFII β Rabbit Polyclonal Antibody
Description	Rabbit Polyclonal Antibody
Host	Rabbit
Application	WB,IHC-P,IF-P,IF-F,ICC/IF,ELISA
Reactivity	Human,Mouse

Performance

Conjugation	Unconjugated
Modification	Unmodified
Isotype	IgG
Clonality	Polyclonal
Form	Liquid
Storage	Store at 4°C short term. Aliquot and store at -20°C long term. Avoid freeze/thaw cycles.
Buffer	Liquid in PBS containing 50% glycerol, 0.5% BSA and 0.02% New type preservative N.
Purification	Affinity purification

Immunogen

Gene Name	GTF2E2
Alternative Names	GTF2E2; TF2E2; Transcription initiation factor IIE subunit beta; TFII β -beta; General transcription factor IIE subunit 2
Gene ID	2961.0
SwissProt ID	P29084.The antiserum was produced against synthesized peptide derived from human TF2E2. AA range:151-200

Application

Dilution Ratio	WB 1:500-1:2000, IHC-P 1:100-1:300, ELISA 1:20000, IF-P/IF-F/ICC/IF 1:50-200
Molecular Weight	33kDa

Product Name: TFIIE- β Rabbit Polyclonal Antibody
Catalog #: APRab18831



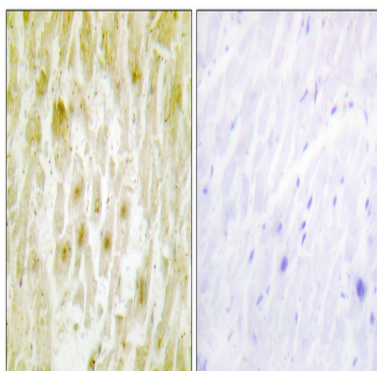
Background

function:Recruits TFIH to the initiation complex and stimulates the RNA polymerase II C-terminal domain kinase and DNA-dependent ATPase activities of TFIH. Both TFIH and TFIIE are required for promoter clearance by RNA polymerase.,similarity:Belongs to the TFIIE beta subunit family.,similarity:Contains 1 TFIIE beta DNA-binding domain.,subunit:Tetramer of two alpha and two beta chains. Interacts with FACT subunit SUPT16H.,function:Recruits TFIH to the initiation complex and stimulates the RNA polymerase II C-terminal domain kinase and DNA-dependent ATPase activities of TFIH. Both TFIH and TFIIE are required for promoter clearance by RNA polymerase.,similarity:Belongs to the TFIIE beta subunit family.,similarity:Contains 1 TFIIE beta DNA-binding domain.,subunit:Tetramer of two alpha and two beta chains. Interacts with FACT subunit SUPT16H.,

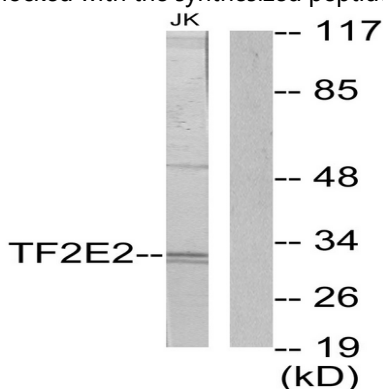
Research Area

Basal transcription factors;

Image Data

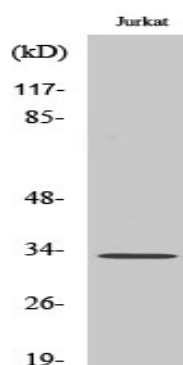


Immunohistochemistry analysis of paraffin-embedded human heart tissue, using TF2E2 Antibody. The picture on the right is blocked with the synthesized peptide.



Western blot analysis of lysates from Jurkat cells, using TF2E2 Antibody. The lane on the right is blocked with the synthesized peptide.

Product Name: TFII β Rabbit Polyclonal Antibody
Catalog #: APRab18831



Western Blot analysis of various cells using TFII β Polyclonal Antibody cells nucleus extracted by Minute TM Cytoplasmic and Nuclear Fractionation kit (SC-003, Invent biotech, MN, USA) .

Note

For research use only.