

Summary

Production Name	TFIIA- α Rabbit Polyclonal Antibody
Description	Rabbit Polyclonal Antibody
Host	Rabbit
Application	WB,IHC-P,IF-P,IF-F,ICC/IF,ELISA
Reactivity	Human,Mouse,Rat

Performance

Conjugation	Unconjugated
Modification	Unmodified
Isotype	IgG
Clonality	Polyclonal
Form	Liquid
Storage	Store at 4°C short term. Aliquot and store at -20°C long term. Avoid freeze/thaw cycles.
Buffer	Liquid in PBS containing 50% glycerol, 0.5% BSA and 0.02% New type preservative N.
Purification	Affinity purification

Immunogen

Gene Name	GTF2A1
Alternative Names	GTF2A1; TF2A1; Transcription initiation factor IIA subunit 1; General transcription factor IIA subunit 1; TFIIAL; Transcription initiation factor TFIIA 42 kDa subunit; TFIIA-42
Gene ID	2957.0
SwissProt ID	P52655.The antiserum was produced against synthesized peptide derived from human TF2A1. AA range:281-330

Application

Dilution Ratio	WB 1:500-1:2000, IHC-P 1:100-1:300, ELISA 1:40000, IF-P/IF-F/ICC/IF 1:50-200
Molecular Weight	42kDa

Product Name: TFIIA- α Rabbit Polyclonal Antibody
Catalog #: APRab18829



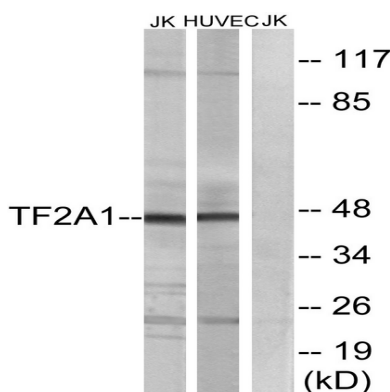
Background

Accurate transcription initiation on TATA-containing class II genes involves the ordered assembly of RNA polymerase II (POLR2A; MIM 180660) and several general initiation factors (summarized by DeJong and Roeder, 1993 [PubMed 8224848]). One of these factors is TFIIA, which when purified from HeLa extracts consists of 35-, 19-, and 12-kD subunits. [supplied by OMIM, Jul 2010],function:TFIIA is a component of the transcription machinery of RNA polymerase II and plays an important role in transcriptional activation. TFIIA in a complex with TBP mediates transcriptional activity.,PTM:The alpha and beta subunits are postranslationally produced from the precursor form by TASP1. The cleavage promotes proteosomal degradation.,similarity:Belongs to the TFIIA subunit 1 family.,subunit:TFIIA is a heterodimer of the large unprocessed subunit 1 and a small subunit gamma. It was originally believed to be a heterotrimer of an alpha (p35), a beta (p19) and a gamma subunit (p12). TFIIA forms a complex with TBP.,

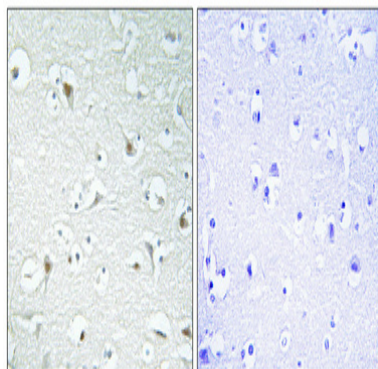
Research Area

Basal transcription factors;

Image Data



Western blot analysis of lysates from Jurkat and HUVEC cells, using TF2A1 Antibody. The lane on the right is blocked with the synthesized peptide.



Immunohistochemical analysis of paraffin-embedded Human brain. Antibody was diluted at 1:100 (4 $^{\circ}$,overnight) . High-pressure and temperature Tris-EDTA,pH8.0 was used for antigen retrieval. Negative contrl (right) obtained from antibody

Product Name: TFIIA- α Rabbit Polyclonal Antibody
Catalog #: APRab18829



was pre-absorbed by immunogen peptide.

Note

For research use only.