

## Summary

<b>Production Name</b>	TFEB Rabbit Polyclonal Antibody
<b>Description</b>	Rabbit Polyclonal Antibody
<b>Host</b>	Rabbit
<b>Application</b>	WB,IHC-P,IF-P,IF-F,ICC/IF,ELISA
<b>Reactivity</b>	Human,Mouse

## Performance

<b>Conjugation</b>	Unconjugated
<b>Modification</b>	Unmodified
<b>Isotype</b>	IgG
<b>Clonality</b>	Polyclonal
<b>Form</b>	Liquid
<b>Storage</b>	Store at 4°C short term. Aliquot and store at -20°C long term. Avoid freeze/thaw cycles.
<b>Buffer</b>	Liquid in PBS containing 50% glycerol, 0.5% BSA and 0.02% New type preservative N.
<b>Purification</b>	Affinity purification

## Immunogen

<b>Gene Name</b>	TFEB
<b>Alternative Names</b>	TFEB; BHLHE35; Transcription factor EB; Class E basic helix-loop-helix protein 35; bHLHe35
<b>Gene ID</b>	7942.0
<b>SwissProt ID</b>	P19484.The antiserum was produced against synthesized peptide derived from human TFEB. AA range:10-59

## Application

<b>Dilution Ratio</b>	WB 1:500-1:2000, IHC-P 1:100-1:300, ELISA 1:20000, IF-P/IF-F/ICC/IF 1:50-200
<b>Molecular Weight</b>	52kDa

**Product Name: TFEB Rabbit Polyclonal Antibody**  
**Catalog #: AP Rab18825**

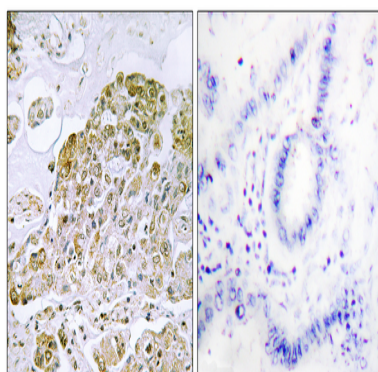


## Background

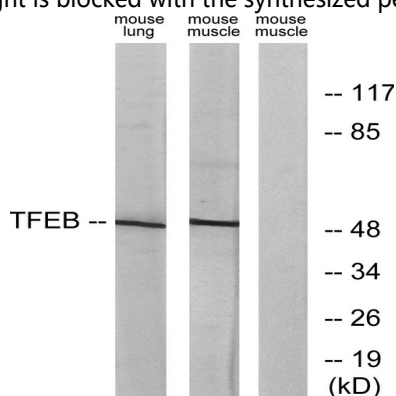
function: Probable transcription factor binds to the USF/MLTF site and probably recognizes E-box sequences in the heavy-chain immunoglobulin enhancer., similarity: Belongs to the MiT/TFE family., similarity: Contains 1 basic helix-loop-helix (bHLH) domain., subunit: Efficient DNA binding requires dimerization with another bHLH protein., function: Probable transcription factor binds to the USF/MLTF site and probably recognizes E-box sequences in the heavy-chain immunoglobulin enhancer., similarity: Belongs to the MiT/TFE family., similarity: Contains 1 basic helix-loop-helix (bHLH) domain., subunit: Efficient DNA binding requires dimerization with another bHLH protein.,

## Research Area

## Image Data

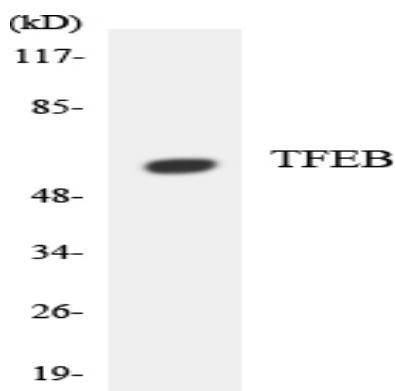


Immunohistochemistry analysis of paraffin-embedded human lung carcinoma tissue, using TFEB Antibody. The picture on the right is blocked with the synthesized peptide.

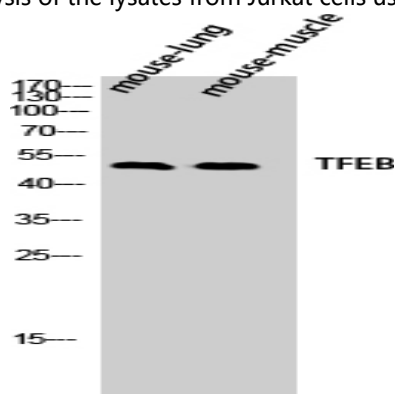


Western blot analysis of lysates from mouse lung and mouse muscle cells, using TFEB Antibody. The lane on the right is blocked with the synthesized peptide.

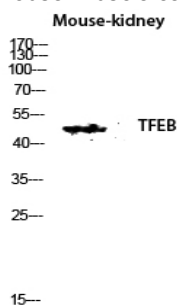
**Product Name: TFEB Rabbit Polyclonal Antibody**  
**Catalog #: APRab18825**



Western blot analysis of the lysates from Jurkat cells using TFEB antibody.



Western Blot analysis of mouse-lung mouse-muscle cells using TFEB Polyclonal Antibody diluted at 1 : 500



Western blot analysis of Mouse-kidney lysis using TFEB antibody. Antibody was diluted at 1:500

## Note

For research use only.