

**Product Name: TEF-5 Rabbit Polyclonal Antibody**  
**Catalog #: APRab18776**



## Summary

<b>Production Name</b>	TEF-5 Rabbit Polyclonal Antibody
<b>Description</b>	Rabbit Polyclonal Antibody
<b>Host</b>	Rabbit
<b>Application</b>	WB,ELISA
<b>Reactivity</b>	Human,Mouse

## Performance

<b>Conjugation</b>	Unconjugated
<b>Modification</b>	Unmodified
<b>Isotype</b>	IgG
<b>Clonality</b>	Polyclonal
<b>Form</b>	Liquid
<b>Storage</b>	Store at 4°C short term. Aliquot and store at -20°C long term. Avoid freeze/thaw cycles.
<b>Buffer</b>	Liquid in PBS containing 50% glycerol, 0.5% BSA and 0.02% New type preservative N.
<b>Purification</b>	Affinity purification

## Immunogen

<b>Gene Name</b>	TEAD3
<b>Alternative Names</b>	TEAD3; TEAD5; TEF5; Transcriptional enhancer factor TEF-5; DTEF-1; TEA domain family member 3; TEAD-3
<b>Gene ID</b>	7005.0
<b>SwissProt ID</b>	Q99594. The antiserum was produced against synthesized peptide derived from human TEAD3. AA range:211-260

## Application

<b>Dilution Ratio</b>	WB 1:500-1:2000, ELISA 1:10000. Not yet tested in other applications.
<b>Molecular Weight</b>	49kDa

## Background

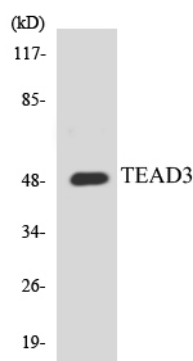
**Product Name: TEF-5 Rabbit Polyclonal Antibody**  
**Catalog #: APRab18776**



This gene product is a member of the transcriptional enhancer factor (TEF) family of transcription factors, which contain the TEA/ATTS DNA-binding domain. It is predominantly expressed in the placenta and is involved in the transactivation of the chorionic somatomammotropin-B gene enhancer. Translation of this protein is initiated at a non-AUG (AUA) start codon. [provided by RefSeq, Jul 2008],function: Binds to multiple functional elements of the human chorionic somatomammotropin-B gene enhancer.,similarity: Contains 1 TEA DNA-binding domain.,tissue specificity: Preferentially expressed in the placenta.,

## Research Area

## Image Data



Western blot analysis of the lysates from HUVEC cells using TEAD3 antibody.

## Note

For research use only.