

Product Name: TCF-1 Rabbit Polyclonal Antibody
Catalog #: APRab18728



Summary

Production Name	TCF-1 Rabbit Polyclonal Antibody
Description	Rabbit Polyclonal Antibody
Host	Rabbit
Application	WB,IHC-P,IF-P,IF-F,ICC/IF,ELISA
Reactivity	Human,Mouse

Performance

Conjugation	Unconjugated
Modification	Unmodified
Isotype	IgG
Clonality	Polyclonal
Form	Liquid
Storage	Store at 4°C short term. Aliquot and store at -20°C long term. Avoid freeze/thaw cycles.
Buffer	Liquid in PBS containing 50% glycerol, 0.5% BSA and 0.02% New type preservative N.
Purification	Affinity purification

Immunogen

Gene Name	TCF7
Alternative Names	TCF7; TCF1; Transcription factor 7; TCF-7; T-cell-specific transcription factor 1; T-cell factor 1; TCF-1
Gene ID	6932.0
SwissProt ID	P36402.The antiserum was produced against synthesized peptide derived from human TCF7. AA range:10-59

Application

Dilution Ratio	WB 1:500-1:2000, IHC-P 1:100-1:300, ELISA 1:10000, IF-P/IF-F/ICC/IF 1:50-200
Molecular Weight	42kDa

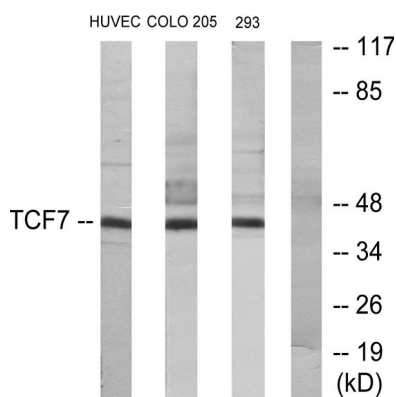
Background

alternative products: 2 series of isoforms, L and S, are produced by use of alternative promoter usage. Additional isoforms seem to exist, function: Transcriptional activator involved in T-cell lymphocyte differentiation. Necessary for the survival of CD4(+) CD8(+) immature thymocytes. Isoforms lacking the N-terminal CTNNB1 binding domain cannot fulfill this role. Binds to the T-lymphocyte-specific enhancer element (5'-WWCAAAG-3') found in the promoter of the CD3E gene. May also act as feedback transcriptional repressor of CTNNB1 and TCF7L2 target genes. TLE1, TLE2, TLE3 and TLE4 repress transactivation mediated by TCF7 and CTNNB1., induction: By TCF7L2 and CTNNB1., sequence caution: Wrong choice of frame., similarity: Belongs to the TCF/LEF family., similarity: Contains 1 HMG box DNA-binding domain., subunit: Binds the armadillo repeat of CTNNB1 and forms a stable complex. Interacts with AES, TLE1, TLE2, TLE3 and TLE4., tissue specificity: Predominantly in T-cells. Also detected in proliferating intestinal epithelial cells and in the basal epithelial cells of mammary gland epithelium., alternative products: 2 series of isoforms, L and S, are produced by use of alternative promoter usage. Additional isoforms seem to exist, function: Transcriptional activator involved in T-cell lymphocyte differentiation. Necessary for the survival of CD4(+) CD8(+) immature thymocytes. Isoforms lacking the N-terminal CTNNB1 binding domain cannot fulfill this role. Binds to the T-lymphocyte-specific enhancer element (5'-WWCAAAG-3') found in the promoter of the CD3E gene. May also act as feedback transcriptional repressor of CTNNB1 and TCF7L2 target genes. TLE1, TLE2, TLE3 and TLE4 repress transactivation mediated by TCF7 and CTNNB1., induction: By TCF7L2 and CTNNB1., sequence caution: Wrong choice of frame., similarity: Belongs to the TCF/LEF family., similarity: Contains 1 HMG box DNA-binding domain., subunit: Binds the armadillo repeat of CTNNB1 and forms a stable complex. Interacts with AES, TLE1, TLE2, TLE3 and TLE4., tissue specificity: Predominantly in T-cells. Also detected in proliferating intestinal epithelial cells and in the basal epithelial cells of mammary gland epithelium.,

Research Area

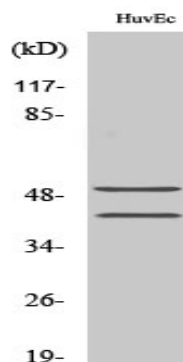
Stem cell pathway; WNT; WNT-T CELL; β -Catenin; Protein_Acetylation

Image Data



Western blot analysis of lysates from HUVEC, COLO205, and 293 cells, using TCF7 Antibody. The lane on the right is blocked with the synthesized peptide.

Product Name: TCF-1 Rabbit Polyclonal Antibody
Catalog #: APRab18728



Western Blot analysis of various cells using TCF-1 Polyclonal Antibody diluted at 1: 1000 cells nucleus extracted by Minute
TM Cytoplasmic and Nuclear Fractionation kit (SC-003, Inventbiotech, MN, USA) .

Note

For research use only.