

**Product Name: TCEAL3/5/6 Rabbit Polyclonal Antibody**  
**Catalog #: APRab18724**



## Summary

<b>Production Name</b>	TCEAL3/5/6 Rabbit Polyclonal Antibody
<b>Description</b>	Rabbit Polyclonal Antibody
<b>Host</b>	Rabbit
<b>Application</b>	IHC-P,IF-P,IF-F,ICC/IF,ELISA
<b>Reactivity</b>	Human,Rat,Mouse

## Performance

<b>Conjugation</b>	Unconjugated
<b>Modification</b>	Unmodified
<b>Isotype</b>	IgG
<b>Clonality</b>	Polyclonal
<b>Form</b>	Liquid
<b>Storage</b>	Store at 4°C short term. Aliquot and store at -20°C long term. Avoid freeze/thaw cycles.
<b>Buffer</b>	Liquid in PBS containing 50% glycerol, 0.5% BSA and 0.02% New type preservative N.
<b>Purification</b>	Affinity purification

## Immunogen

<b>Gene Name</b>	TCEAL3/5/6 TCEAL3; MSTP072; Transcription elongation factor A protein-like 3; TCEA-like protein 3;
<b>Alternative Names</b>	Transcription elongation factor S-II protein-like 3; TCEAL5; Transcription elongation factor A protein-like 5; TCEA-like protein 5; Transcription elonga
<b>Gene ID</b>	85012.0
<b>SwissProt ID</b>	Q969E4/Q5H9L2/Q6IPX3. The antiserum was produced against synthesized peptide derived from human TCEAL3. AA range:141-190

## Application

<b>Dilution Ratio</b>	IHC-P 1:100-1:300, ELISA 1:40000, IF-P/IF-F/ICC/IF 1:50-200
<b>Molecular Weight</b>	

**Product Name: TCEAL3/5/6 Rabbit Polyclonal Antibody**  
**Catalog #: APRab18724**

---

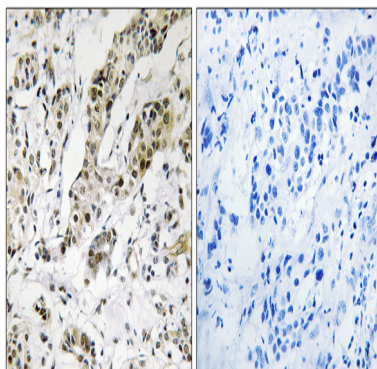


## Background

This gene encodes a member of the transcription elongation factor A (SII)-like (TCEAL) gene family. Members of this family contain TFA domains and may function as nuclear phosphoproteins that modulate transcription in a promoter context-dependent manner. Multiple family members are located on the X chromosome. Alternative splicing results in multiple transcript variants encoding a single isoform. [provided by RefSeq, Jul 2008],function:May be involved in transcriptional regulation.,PTM:Phosphorylated upon DNA damage, probably by ATM or ATR.,similarity:Belongs to the TFS-II family. TFA subfamily.,

## Research Area

## Image Data



Immunohistochemistry analysis of paraffin-embedded human breast carcinoma, using TCEAL3/5/6 Antibody. The picture on the right is blocked with the synthesized peptide.

## Note

For research use only.