

Summary

Production Name	TBX15/18 Rabbit Polyclonal Antibody
Description	Rabbit Polyclonal Antibody
Host	Rabbit
Application	WB,IHC-P,IF-P,IF-F,ICC/IF,ELISA
Reactivity	Human,Mouse

Performance

Conjugation	Unconjugated
Modification	Unmodified
Isotype	IgG
Clonality	Polyclonal
Form	Liquid
Storage	Store at 4°C short term. Aliquot and store at -20°C long term. Avoid freeze/thaw cycles.
Buffer	Liquid in PBS containing 50% glycerol, 0.5% BSA and 0.02% New type preservative N.
Purification	Affinity purification

Immunogen

Gene Name	TBX15/TBX18
Alternative Names	TBX18; T-box transcription factor TBX18; T-box protein 18; TBX15; TBX14; T-box transcription factor TBX15; T-box protein 15; T-box transcription factor TBX14; T-box protein 14
Gene ID	9096.0
SwissProt ID	O95935/Q96SF7.The antiserum was produced against synthesized peptide derived from human TBX15/18. AA range:161-210

Application

Dilution Ratio	WB 1:500-1:2000, IHC-P 1:100-1:300, IF-P/IF-F/ICC/IF 1:200-1:1000, ELISA 1:20000.Not yet tested in other applications.
-----------------------	--

Product Name: TBX15/18 Rabbit Polyclonal Antibody
Catalog #: APRab18701



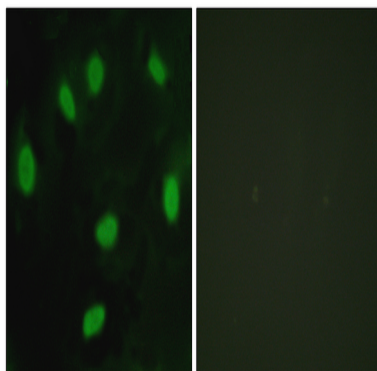
Molecular Weight 64kDa

Background

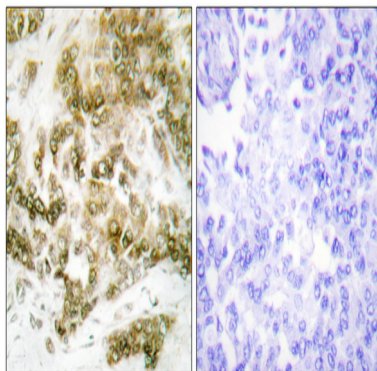
T-box 18(TBX18) Homo sapiens This genes codes for a member of an evolutionarily conserved family of transcription factors that plays a crucial role in embryonic development. The family is characterized by the presence of the DNA-binding T-box domain and is divided into five sub-families based on sequence conservation in this domain. The encoded protein belongs to the vertebrate specific Tbx1 sub-family. The protein acts as a transcriptional repressor by antagonizing transcriptional activators in the T-box family. The protein forms homo- or heterodimers with other transcription factors of the T-box family or other transcription factors. [provided by RefSeq, Nov 2012],function:Probable transcriptional regulator involved in developmental processes.,similarity:Contains 1 T-box DNA-binding domain.,

Research Area

Image Data

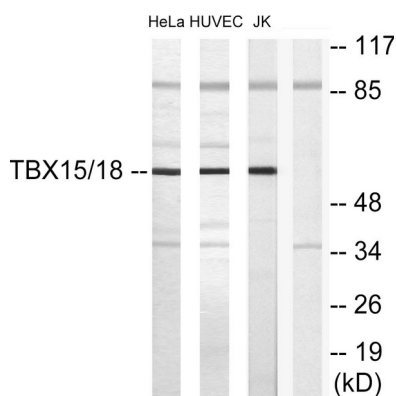


Immunofluorescence analysis of HeLa cells, using TBX15/18 Antibody. The picture on the right is blocked with the synthesized peptide.

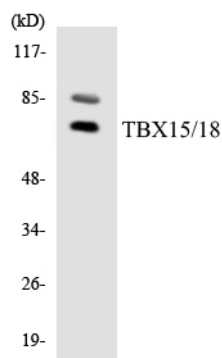


Immunohistochemistry analysis of paraffin-embedded human breast carcinoma tissue, using TBX15/18 Antibody. The picture on the right is blocked with the synthesized peptide.

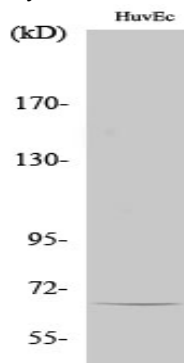
Product Name: TBX15/18 Rabbit Polyclonal Antibody
Catalog #: APRab18701



Western blot analysis of lysates from HUVEC, HeLa, and Jurkat cells, using TBX15/18 Antibody. The lane on the right is blocked with the synthesized peptide.



Western blot analysis of the lysates from HeLa cells using TBX15/18 antibody.



Western Blot analysis of various cells using TBX15/18 Polyclonal Antibody cells nucleus extracted by Minute TM Cytoplasmic and Nuclear Fractionation kit (SC-003, Invent biotech, MN, USA) .

Note

For research use only.