

Product Name: TBC1D3A/B/C Rabbit Polyclonal Antibody
Catalog #: APRab18676

Summary

Production Name	TBC1D3A/B/C Rabbit Polyclonal Antibody
Description	Rabbit Polyclonal Antibody
Host	Rabbit
Application	WB,IF-P,IF-F,ICC/IF,ELISA
Reactivity	Human,Rat,Mouse

Performance

Conjugation	Unconjugated
Modification	Unmodified
Isotype	IgG
Clonality	Polyclonal
Form	Liquid
Storage	Store at 4°C short term. Aliquot and store at -20°C long term. Avoid freeze/thaw cycles.
Buffer	Liquid in PBS containing 50% glycerol, 0.5% BSA and 0.02% New type preservative N.
Purification	Affinity purification

Immunogen

Gene Name	TBC1D3 TBC1D3; PRC17; TBC1D3A; TBC1 domain family member 3; Prostate cancer gene 17 protein; Protein TRE17-alpha; Rab GTPase-activating protein PRC17; TBC1D3B; TBC1D3I; TBC1 domain family member 3B; TBC1D3C; TBC1D3D; TBC1 domain family member 3C
Alternative Names	
Gene ID	414059/727735/84218/643947/414060/653380/654341/729873
SwissProt ID	Q8IZP1/A6NDS4/Q6IPX1.The antiserum was produced against synthesized peptide derived from human TBC1D3. AA range:481-530

Application

Dilution Ratio	WB 1:500-1:2000, ELISA 1:20000, IF-P/IF-F/ICC/IF 1:50-200
-----------------------	---

Product Name: TBC1D3A/B/C Rabbit Polyclonal Antibody
Catalog #: AP Rab18676

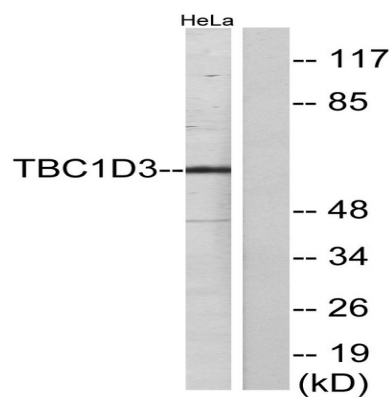
Molecular Weight 62kDa

Background

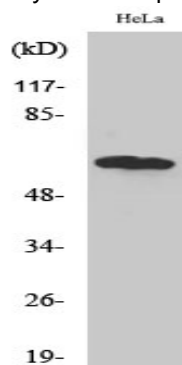
This gene represents one of a cluster of related genes found on chromosome 17. The proteins encoded by this gene family contain a TBC (Tre-2, Bub2p, and Cdc16p) domain and may be involved in GTPase signaling and vesicle trafficking. [provided by RefSeq, Apr 2014], disease: May be involved in forms of prostate cancers., function: Acts as a GTPase activating protein for RAB5. Does not act on RAB4 or RAB11., similarity: Contains 1 Rab-GAP TBC domain., tissue specificity: Expressed in liver, skeletal muscle, kidney, pancreas, spleen, testis, ovary, small intestine and peripheral blood leukocytes. Overexpressed in prostate cancers., tissue specificity: Expressed in pancreas, thymus and testis.,

Research Area

Image Data



Western blot analysis of lysates from HeLa cells, using TBC1D3 Antibody. The lane on the right is blocked with the synthesized peptide.



Western Blot analysis of various cells using TBC1D3A/B/C Polyclonal Antibody



**Product Name: TBC1D3A/B/C Rabbit Polyclonal
Antibody**
Catalog #: APRab18676

Note

For research use only.