

## Summary

<b>Production Name</b>	TASK-5 Rabbit Polyclonal Antibody
<b>Description</b>	Rabbit Polyclonal Antibody
<b>Host</b>	Rabbit
<b>Application</b>	WB,IHC-P,IF-P,IF-F,ICC/IF,ELISA
<b>Reactivity</b>	Human,Rat,Mouse

## Performance

<b>Conjugation</b>	Unconjugated
<b>Modification</b>	Unmodified
<b>Isotype</b>	IgG
<b>Clonality</b>	Polyclonal
<b>Form</b>	Liquid
<b>Storage</b>	Store at 4°C short term. Aliquot and store at -20°C long term. Avoid freeze/thaw cycles.
<b>Buffer</b>	Liquid in PBS containing 50% glycerol, 0.5% BSA and 0.02% New type preservative N.
<b>Purification</b>	Affinity purification

## Immunogen

<b>Gene Name</b>	KCNK15
<b>Alternative Names</b>	KCNK15; TASK5; Potassium channel subfamily K member 15; Acid-sensitive potassium channel protein TASK-5; TWIK-related acid-sensitive K(+) channel 5; Two pore potassium channel KT3.3; Two pore K(+) channel KT3.3
<b>Gene ID</b>	60598.0
<b>SwissProt ID</b>	Q9H427.The antiserum was produced against synthesized peptide derived from human KCNK15. AA range:273-322

## Application

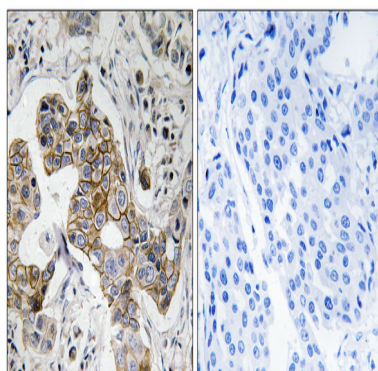
<b>Dilution Ratio</b>	WB 1:500-1:2000, IHC-P 1:100-1:300, ELISA 1:20000, IF-P/IF-F/ICC/IF 1:50-200
<b>Molecular Weight</b>	42kDa

## Background

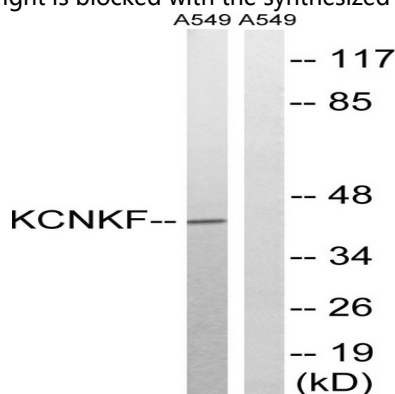
potassium two pore domain channel subfamily K member 15(KCNK15) Homo sapiens This gene encodes one of the members of the superfamily of potassium channel proteins containing two pore-forming P domains. The product of this gene has not been shown to be a functional channel, however, it may require other non-pore-forming proteins for activity. [provided by RefSeq, Jul 2008],function:Probable potassium channel subunit. No channel activity observed in heterologous systems. May need to associate with another protein to form a functional channel.,polymorphism:Three variant polypeptides are known: TASK-5A, TASK-5B and TASK-5C. The sequence shown is that of TASK-5C.,similarity:Belongs to the two pore domain potassium channel (TC 1.A.1.8) family.,subunit:Heterodimer ,tissue specificity:Detected in pancreas, heart, placenta, lung, liver, kidney, ovary, testis, skeletal muscle and adrenal gland, and at lower levels in prostate, spleen and thyroid gland.,

## Research Area

## Image Data



Immunohistochemistry analysis of paraffin-embedded human breast carcinoma tissue, using KCNK15 Antibody. The picture on the right is blocked with the synthesized peptide.



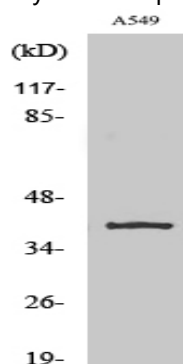
Western blot analysis of lysates from A549 cells, using KCNK15 Antibody. The lane on the right is blocked with the synthesized peptide.

**Product Name: TASK-5 Rabbit Polyclonal Antibody**  
**Catalog #: APRab18652**

---



synthesized peptide.



Western Blot analysis of various cells using TASK-5 Polyclonal Antibody diluted at 1: 1000

### **Note**

For research use only.