

Product Name: TA2R Rabbit Polyclonal Antibody
Catalog #: APRab18584



Summary

Production Name	TA2R Rabbit Polyclonal Antibody
Description	Rabbit Polyclonal Antibody
Host	Rabbit
Application	WB,ELISA
Reactivity	Human,Rat,Mouse

Performance

Conjugation	Unconjugated
Modification	Unmodified
Isotype	IgG
Clonality	Polyclonal
Form	Liquid
Storage	Store at 4°C short term. Aliquot and store at -20°C long term. Avoid freeze/thaw cycles.
Buffer	Liquid in PBS containing 50% glycerol, and 0.02% New type preservative N.
Purification	Affinity purification

Immunogen

Gene Name	TBXA2R
Alternative Names	
Gene ID	6915.0
SwissProt ID	P21731. Synthesized peptide derived from human protein . at AA range: 230-310

Application

Dilution Ratio	WB 1:500-2000, ELISA 1:5000-20000
Molecular Weight	37kDa

Background

thromboxane A2 receptor(TBXA2R) Homo sapiens This gene encodes a member of the G protein-coupled receptor family. The protein interacts with thromboxane A2 to induce platelet aggregation and regulate hemostasis. A mutation in

Product Name: TA2R Rabbit Polyclonal Antibody
Catalog #: APRab18584

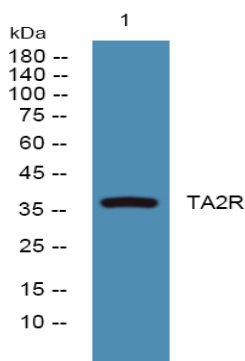


this gene results in a bleeding disorder. Multiple transcript variants encoding different isoforms have been found for this gene. [provided by RefSeq, Oct 2009],disease:Defects in TBXA2R are the cause of a dominantly inherited bleeding disorder [MIM:188070],function:Receptor for thromboxane A2 (TXA2), a potent stimulator of platelet aggregation. The activity of this receptor is mediated by a G-protein that activates a phosphatidylinositol-calcium second messenger system. In the kidney, the binding of TXA2 to glomerular TP receptors causes intense vasoconstriction. Activates phospholipase C. Isoform 1 activates adenylyl cyclase, isoform 2 inhibits adenylyl cyclase.,similarity:Belongs to the G-protein coupled receptor 1 family.,

Research Area

Calcium;Neuroactive ligand-receptor interaction;

Image Data



Western blot analysis of lysates from PC12 cells, primary antibody was diluted at 1:1000, 4° over night

Note

For research use only.