

**Product Name: T2R1 Rabbit Polyclonal Antibody**  
**Catalog #: APRab18557**



## Summary

<b>Production Name</b>	T2R1 Rabbit Polyclonal Antibody
<b>Description</b>	Rabbit Polyclonal Antibody
<b>Host</b>	Rabbit
<b>Application</b>	WB,ELISA,IHC-P
<b>Reactivity</b>	Human,Rat,Mouse

## Performance

<b>Conjugation</b>	Unconjugated
<b>Modification</b>	Unmodified
<b>Isotype</b>	IgG
<b>Clonality</b>	Polyclonal
<b>Form</b>	Liquid
<b>Storage</b>	Store at 4°C short term. Aliquot and store at -20°C long term. Avoid freeze/thaw cycles.
<b>Buffer</b>	Liquid in PBS containing 50% glycerol, 0.5% BSA and 0.02% New type preservative N.
<b>Purification</b>	Affinity purification

## Immunogen

<b>Gene Name</b>	TAS2R1
<b>Alternative Names</b>	TAS2R1; Taste receptor type 2 member 1; T2R1; Taste receptor family B member 7; TRB7
<b>Gene ID</b>	50834.0
<b>SwissProt ID</b>	Q9NYW7.The antiserum was produced against synthesized peptide derived from human TAS2R1. AA range:6-55

## Application

<b>Dilution Ratio</b>	WB 1:500-2000, IHC-P 1:50-300, ELISA 2000-20000
<b>Molecular Weight</b>	33kDa

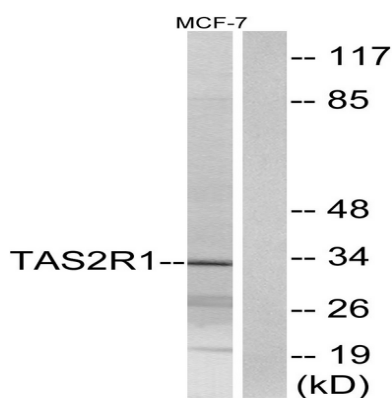
## Background

This gene encodes a member of a family of candidate taste receptors that are members of the G protein-coupled receptor superfamily and that are specifically expressed by taste receptor cells of the tongue and palate epithelia. This intronless taste receptor gene encodes a 7-transmembrane receptor protein, functioning as a bitter taste receptor. This gene is mapped to chromosome 5p15, the location of a genetic locus (PROP) that controls the detection of the bitter compound 6-n-propyl-2-thiouracil. [provided by RefSeq, Jul 2008],function:Receptor that may play a role in the perception of bitterness and is gustducin-linked. May play a role in sensing the chemical composition of the gastrointestinal content. The activity of this receptor may stimulate alpha gustducin, mediate PLC-beta-2 activation and lead to the gating of TRPM5.,miscellaneous:Most taste cells may be activated by a limited number of bitter compounds; individual taste cells can discriminate among bitter stimuli.,similarity:Belongs to the G-protein coupled receptor T2R family.,tissue specificity:Expressed in subsets of taste receptor cells of the tongue and palate epithelium and exclusively in gustducin-positive cells.,

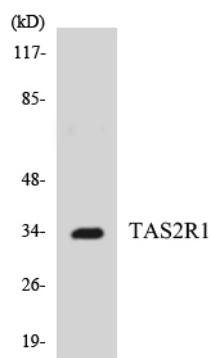
## Research Area

Taste transduction;

## Image Data



Western blot analysis of lysates from MCF-7 cells, using TAS2R1 Antibody. The lane on the right is blocked with the synthesized peptide.



**Product Name: T2R1 Rabbit Polyclonal Antibody**  
**Catalog #: APRab18557**



---

Western blot analysis of the lysates from K562 cells using TAS2R1 antibody.

**Note**

For research use only.