

**Product Name: Syndecan-2 Rabbit Polyclonal Antibody**  
**Catalog #: APRab18503**



## Summary

<b>Production Name</b>	Syndecan-2 Rabbit Polyclonal Antibody
<b>Description</b>	Rabbit Polyclonal Antibody
<b>Host</b>	Rabbit
<b>Application</b>	WB,ELISA
<b>Reactivity</b>	Human,Rat,Mouse

## Performance

<b>Conjugation</b>	Unconjugated
<b>Modification</b>	Unmodified
<b>Isotype</b>	IgG
<b>Clonality</b>	Polyclonal
<b>Form</b>	Liquid
<b>Storage</b>	Store at 4°C short term. Aliquot and store at -20°C long term. Avoid freeze/thaw cycles.
<b>Buffer</b>	Liquid in PBS containing 50% glycerol, 0.5% BSA and 0.02% New type preservative N.
<b>Purification</b>	Affinity purification

## Immunogen

<b>Gene Name</b>	SDC2
<b>Alternative Names</b>	SDC2; HSPG1; Syndecan-2; SYND2; Fibroglycan; Heparan sulfate proteoglycan core protein; HSPG; CD antigen CD362
<b>Gene ID</b>	6383.0
<b>SwissProt ID</b>	P34741.The antiserum was produced against synthesized peptide derived from human SDC2. AA range:81-130

## Application

<b>Dilution Ratio</b>	WB 1:500-1:2000, ELISA 1:5000.Not yet tested in other applications.
<b>Molecular Weight</b>	22kDa

**Product Name: Syndecan-2 Rabbit Polyclonal Antibody**  
**Catalog #: AP Rab18503**



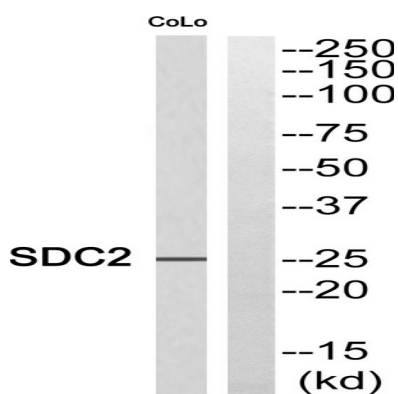
## Background

The protein encoded by this gene is a transmembrane (type I) heparan sulfate proteoglycan and is a member of the syndecan proteoglycan family. The syndecans mediate cell binding, cell signaling, and cytoskeletal organization and syndecan receptors are required for internalization of the HIV-1 tat protein. The syndecan-2 protein functions as an integral membrane protein and participates in cell proliferation, cell migration and cell-matrix interactions via its receptor for extracellular matrix proteins. Altered syndecan-2 expression has been detected in several different tumor types. [provided by RefSeq, Jul 2008],function:Cell surface proteoglycan that bears heparan sulfate.,function:Cell surface proteoglycan.,similarity:Belongs to the syndecan proteoglycan family.,

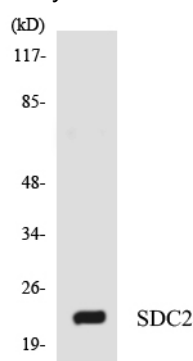
## Research Area

ECM-receptor interaction;Cell adhesion molecules (CAMs);

## Image Data



Western blot analysis of SDC2 Antibody. The lane on the right is blocked with the SDC2 peptide.



Western blot analysis of the lysates from RAW264.7 cells using SDC2 antibody.

## Note

For research use only.